

OBJECTIVE

Primarily focused on reliable income with a secondary focus on growth. Profile is similar to a well-diversified bond portfolio alongside an equity allocation.

INVESTMENT PHILOSOPHY

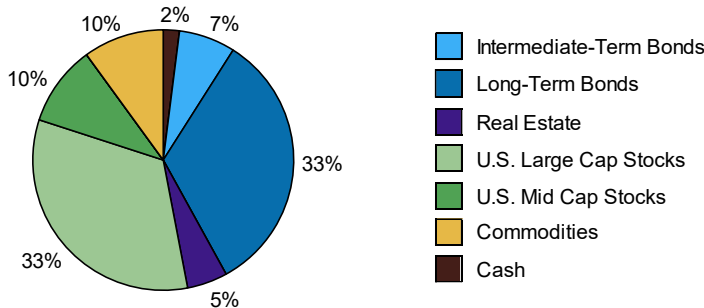
Asset allocation is a portfolio management process where various asset classes are combined in one portfolio. Properly implemented, asset allocation is a time-tested approach that addresses risk through diversification. The Confluence approach to asset allocation is different than traditional asset allocation approaches which rely on long-term historical averages for strategic capital market assumptions. Confluence recognizes that risk levels and return potential rise and fall over market and economic cycles. Therefore, we apply an adaptive process in which the Confluence team estimates the performance of 12 different asset classes in terms of risk, return and yield looking forward 3 years. This cyclical approach is not market *timing*. Rather, the intention is to remain within an acceptable risk profile, while changing the asset class mix to optimize return potential. We may adjust allocations in much shorter time frames, depending upon changing views of the marketplace and economy. Alternately, we may abstain from making significant allocation adjustments if we believe the existing posture remains optimal. The process may involve somewhat higher turnover than a more static strategic program, but usually involves less trading relative to tactical approaches.

The asset allocation portfolios utilize exchange-traded funds (ETFs). We may use ETFs that allow us to focus on or avoid particular industry sectors, bond maturities, commodities or countries.

OVERVIEW

- ◆ Focus is oriented toward reliable income, moderate volatility, long-term growth and principal preservation
- ◆ Typically has the majority of its allocation in fixed-income asset classes
- ◆ Smaller portion of the portfolio may include real estate, equities, commodities or other asset classes that contribute growth potential and diversification benefits
- ◆ Profile similar to that of a diversified bond portfolio alongside a smaller proportion of equities
- ◆ Suitable for investors with a conservative risk tolerance

ASSET ALLOCATION¹



CHARACTERISTICS¹

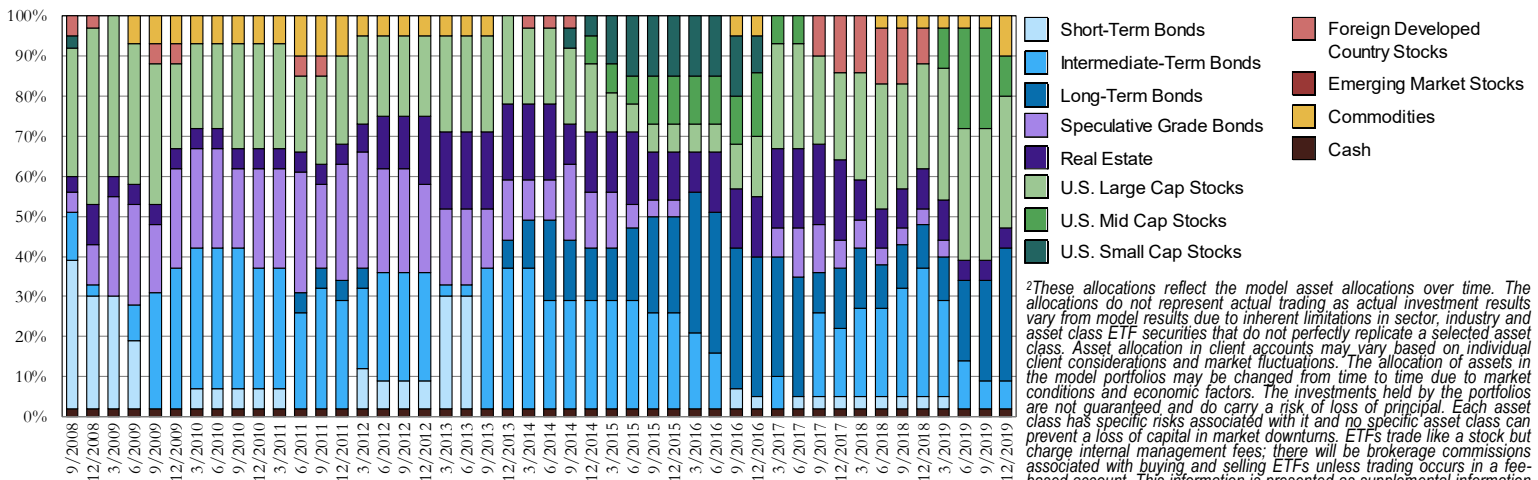
Weighted SEC Yield	2.0%
Number of Securities	15-21
Annual Turnover	30-70%

5 LARGEST HOLDINGS¹

iShares 20+ Year Treasury Bond ETF - TLT	19.2%
iShares S&P 500 Value ETF - IVE	13.4%
iShares Long-Term Corporate Bond ETF - IGLB	11.2%
iShares Gold Trust - IAU	10.0%
iShares S&P 500 Growth ETF - IVW	9.4%

¹This information is presented as supplemental information to the disclosures required by the GIPS® standards. Information presented reflects wrap account composites with "Plus" strategies & taxable income (if applicable). Asset allocations shown represent the individual ETFs used in the model portfolios as of 10/15/19 and do not represent the precise allocation of assets in an actual client account. Asset allocation in client accounts may vary based on individual client considerations and market fluctuations. The allocation of assets in the model portfolio may be changed from time to time due to market conditions and economic factors. The investments held by the portfolio are not guaranteed and do carry a risk of loss of principal. Each asset class has specific risks associated with it and no specific asset class can prevent a loss of capital in market downturns. The listing of "5 Largest Holdings" is not a complete list of all ETFs in the portfolio or which Confluence may be currently recommending. Furthermore, application of the investment strategy as of a later date will likely result in changes to the listing. Contact Confluence for a complete list of holdings. Yield data source: Morningstar. 30-day SEC yield for the model portfolio as of 10/15/19.

HISTORICAL MODEL ALLOCATIONS²



²These allocations reflect the model asset allocations over time. The allocations do not represent actual trading, as actual investment results vary from model results due to inherent limitations in sector, industry and asset class ETF securities that do not perfectly replicate a selected asset class. Asset allocation in client accounts may vary based on individual client considerations and market fluctuations. The allocation of assets in the model portfolios may be changed from time to time due to market conditions and economic factors. The investments held by the portfolios are not guaranteed and do carry a risk of loss of principal. Each asset class has specific risks associated with it and no specific asset class can prevent a loss of capital in market downturns. ETFs trade like a stock but charge internal management fees; there will be brokerage commissions associated with buying and selling ETFs unless trading occurs in a fee-based account. This information is presented as supplemental information to the disclosures required by the GIPS® standards.

ABOUT CONFLUENCE INVESTMENT MANAGEMENT LLC

Confluence Investment Management is an independent Registered Investment Advisor located in St. Louis, Missouri that was founded in 2007. Confluence provides professional portfolio management and advisory services to institutional and individual clients. The firm's investment philosophy is based upon independent, fundamental research that integrates evaluation of market cycles, macroeconomics and geopolitical analysis with the firm's value-driven approach. Confluence's portfolio management philosophy begins by assessing risk and follows through by positioning clients to achieve their income and growth objectives.

FOURTH QUARTER 2019 INCOME WITH GROWTH MARKET OBSERVATIONS

- ◆ The U.S. Federal Reserve and other central banks are expected to continue their accommodative postures, especially considering issues stemming from trade impediments.
- ◆ While we retain a relatively sanguine view of the U.S. economy over our three-year cyclical forecast period, we recognize there is increased potential for an economic downturn.
- ◆ Each strategy reflects a more neutral posture, with risk exposure being trimmed and all residing in the U.S.
- ◆ Within equities, our style guidance has shifted to 60% value/40% growth.
- ◆ The prospect of trade-based earnings compression leads us to lean toward firms with larger market capitalizations, particularly those with more defensive characteristics.
- ◆ Heightened geopolitical uncertainty and the potential for elevated volatility in global equity markets encourages an increased allocation to long-term U.S. Treasuries and gold.

Several changes were made to the Income with Growth strategy this quarter. We increased the exposure to long-term Treasuries due to our expectations that the yield curve will become more traditionally sloped combined with their historic resilience in the face of global economic uncertainty. We retain the laddered maturity structure for the intermediate-term corporate bond exposure as well as a modest allocation to REITs. Among U.S. equities, we reduced the former overweight to mid-cap stocks and introduced a tilt in favor of value versus growth, along with an allocation to the quality factor focusing on profitability, earnings quality and lower leverage. Within large cap sectors, we established overweights to Consumer Staples and Health Care due to favorable valuations and their more defensive characteristics. Although we trimmed a portion of the Technology sector, it remains slightly overweight. We increased the exposure to gold due to its potential to reduce overall strategy risk accruing from geopolitical uncertainty, along with the opportunity it affords in the event of a decline in the U.S. dollar or increased global equity market volatility.

Information provided in this report is for educational and illustrative purposes only and should not be construed as individualized investment advice or a recommendation. The investment or strategy discussed may not be suitable for all investors. Investors must make their own decisions based on their specific investment objectives and financial circumstances. Opinions expressed are current as of the date shown and are subject to change.

PERFORMANCE COMPOSITE RETURNS (FOR PERIODS ENDING SEPTEMBER 30, 2019)

	Pure Gross-of-Fees ¹	Net-of-Fees ²	Benchmark (40stock/60bond)	Inflation	Pure Gross-of-Fees ¹	Net-of-Fees ²	Benchmark (40stock/60bond)	Inflation	Difference (Gross-Bchmrk)	# of Portfolios	Composite Assets (000s)	Total Firm Assets (000s)	Composite 3yr Std Dev	Bchmrk 3yr Std Dev	Composite Dispersion	
Since Inception**	9.8%	6.5%	8.4%	1.7%	2008**	4.5%	4.3%	2.4%	(0.0%)	2.2%	80	\$10,864	\$291,644	N/A	N/A	N/A
					2009	22.9%	19.3%	13.8%	1.1%	9.1%	14	\$4,276	\$533,832	N/A	N/A	N/A
10-Year*	8.3%	5.1%	7.7%	1.8%	2010	12.2%	8.9%	10.4%	1.6%	1.9%	25	\$9,337	\$751,909	N/A	N/A	0.3%
5-Year*	7.2%	4.0%	6.6%	1.7%	2011	4.9%	1.8%	5.9%	1.9%	(0.9%)	43	\$14,679	\$937,487	11.8%	7.6%	0.1%
3-Year*	6.8%	3.7%	7.3%	1.8%	2012	10.1%	6.9%	9.1%	2.0%	1.1%	53	\$20,940	\$1,272,265	7.7%	5.5%	0.1%
1-Year	11.3%	8.0%	8.5%	1.6%	2013	7.8%	4.6%	10.5%	2.0%	(2.7%)	50	\$20,925	\$1,955,915	7.0%	4.7%	0.2%
YTD	16.7%	14.1%	13.6%	1.2%	2014	13.1%	9.8%	9.3%	1.8%	3.8%	54	\$19,985	\$2,589,024	5.5%	3.9%	0.1%
QTD	3.2%	2.4%	2.2%	0.4%	2015	(0.8%)	(3.7%)	1.1%	1.4%	(1.9%)	70	\$27,222	\$3,175,419	6.1%	4.5%	0.1%
					2016	10.0%	6.7%	6.4%	1.5%	3.6%	27	\$5,776	\$4,413,659	7.0%	4.4%	0.1%
					2017	10.5%	7.2%	10.6%	1.8%	(0.1%)	47	\$11,956	\$5,944,479	6.4%	4.0%	0.1%
					2018	(3.8%)	(6.6%)	(1.5%)	2.0%	(2.3%)	52	\$10,840	\$5,486,737	6.3%	4.4%	0.1%

*Average annualized returns

**Inception is 12/1/2008

Portfolio Benchmark

The benchmark is calculated monthly and consists of a blend of 40% S&P 500 and 60% ML U.S. Corporate, Government, and Mortgage Bond Index (Source: Bloomberg)

The benchmark was changed retroactively on 7/1/13 to be more simplified. The custom benchmark prior to 7/1/13 was calculated monthly and consisted of: ML U.S. Corporate, Government, and Mortgage 48%, S&P 500 30%, S&P 400 10%, FTSE NAREIT 5%, MSCI EAFE (gross) 5%, and ML T-Bill 2%. Inflation is provided as additional information and is represented by the U.S. 5-year TIP breakeven spread (Bloomberg: USGGBE05 Index), which had 3-year standard deviation as follows: 0.1% 2011, 0.1% 2012, 0.1% 2013, 0.1% 2014, 0.1% 2015, 0.1% 2016, 0.1% 2017, 0.1% 2018.

Confluence claims compliance with the Global Investment Performance Standards (GIPS®) and has prepared and presented this report in compliance with the GIPS standards. Confluence has been independently verified for the periods of 8/1/2008 through 12/31/2017. A copy of the verification report is available upon request. Verification assesses whether: 1. the firm has complied with all the composite construction requirements of the GIPS standards on a firm-wide basis, and 2. the firm's policies and procedures are designed to calculate and present performance in compliance with the GIPS standards. Verification does not ensure the accuracy of any specific composite presentation.

The Income Taxable with Growth - Plus Composite was created on December 1, 2008. Confluence Investment Management LLC is an independent registered investment adviser. Results are based on fully discretionary accounts under management, including those accounts no longer with the firm. Past performance is not indicative of future results. The U.S. Dollar is the currency used to express performance. Returns are presented gross and net of all fees and include the reinvestment of all income.

¹ Pure gross returns are shown as supplemental information to the disclosures required by the GIPS® standards.

² Net of fee performance was calculated using the highest applicable annual bundled fee of 3.00% applied quarterly. This fee includes brokerage commissions, consulting services and custodial services. The Confluence fee schedule for this composite is as follows: 0.40% on the first \$500,000; 0.35% on the next \$500,000; and 0.30% over \$1,000,000. There are no incentive fees. Clients pay an all-inclusive fee based on a percentage of assets under management. The collection of fees produces a compounding effect on the total rate of return net of fees. Bundled fee accounts make up 100% of the composite for all periods. Actual investment advisory fees incurred by clients may vary. Wrap fee schedules are provided by independent wrap sponsors and are available upon request from the respective wrap sponsor.

A complete list of composite descriptions is available upon request. Additional information regarding policies for valuing portfolios, calculating performance, and preparing compliant presentations are available upon request. The annual composite dispersion is an equal-weighted standard deviation calculated for accounts in the composite for the entire year. The Income Taxable with Growth - Plus Composite contains fully discretionary Income Taxable with Growth - Plus wrap accounts. The Income Taxable with Growth strategy is implemented using ETFs and the investment objective is the pursuit of nominal returns (yield and growth) in excess of inflation, subject to the limitations of the risk constraint for the Income Taxable with Growth strategy. Although the portfolio typically has the majority of its allocation in taxable fixed-income asset classes, a smaller portion of the portfolio may include real estate, equities, commodities or other asset classes. This minority allocation provides an aspect of growth potential, along with diversification benefits. This portfolio may be appropriate for investors with a conservative risk tolerance.

**Results shown for the year 2008 represent partial period performance from December 1, 2008 through December 31, 2008. N/A- Composite Dispersion: Information is not statistically meaningful due to an insufficient number of portfolios in the composite for the entire year. N/A- 3yr Std Dev: Composite does not have 3 years of monthly performance history.

Confluence Asset Allocation Committee

Mark Keller, CFA
William O'Grady
Gregory Ellston
David Miyazaki, CFA

Patty Dahl
Kaisa Stucke, CFA
Patrick Fearon-Hernandez, CFA

The Confluence Mission

Our mission is to provide our clients with superior investment solutions and exceptional client service with the highest standards of ethics and integrity. Our team of investment professionals is committed to delivering innovative products and sound, practical advice to enable investors to achieve their investment objectives.

FOR MORE INFORMATION CONTACT ONE OF OUR SALES TEAM MEMBERS:

Wayne Knowles
National Sales Director | Southeast
(919) 604-7604
wknowles@confluenceim.com

Ron Pond
Regional Mktg Rep | Southwest
(858) 699-7945
rpond@confluenceim.com

Steve Mikez
Regional Mktg Rep | North-Central
(480) 529-8741
smikez@confluenceim.com

Jason Gantt
Regional Mktg Rep | Northeast
(203) 733-9470
jgant@confluenceim.com

Jim Taylor
Regional Mktg Rep | Mid-South
(630) 605-7194
jtaylor@confluenceim.com