

OBJECTIVE

Primarily focused on reliable income with a secondary focus on growth. Profile is similar to a well-diversified bond portfolio alongside an equity allocation.

INVESTMENT PHILOSOPHY

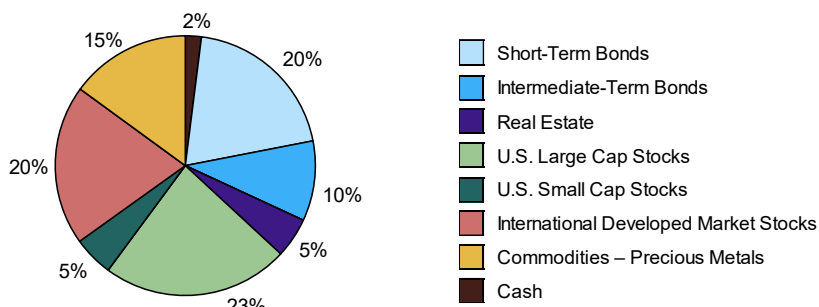
Asset allocation is a portfolio management process where various asset classes are combined in one portfolio. Properly implemented, asset allocation is a time-tested approach that addresses risk through diversification. The Confluence approach to asset allocation is different than traditional asset allocation approaches which rely on long-term historical averages for strategic capital market assumptions. Confluence recognizes that risk levels and return potential rise and fall over market and economic cycles. Therefore, we apply an adaptive process in which the Confluence team estimates the performance of 12 different asset classes in terms of risk, return and yield looking forward three years. This cyclical approach is not market *timing*. Rather, the intention is to remain within an acceptable risk profile, while changing the asset class mix to optimize return potential. We may adjust allocations in much shorter time frames, depending upon changing views of the marketplace and economy. Alternately, we may abstain from making significant allocation adjustments if we believe the existing posture remains optimal. The process may involve somewhat higher turnover than a more static strategic program, but usually involves less trading relative to tactical approaches.

The asset allocation portfolios utilize exchange-traded funds (ETFs). We may use ETFs that allow us to focus on or avoid particular industry sectors, bond maturities, commodities or countries.

OVERVIEW

- ◆ Focus is oriented toward reliable income, moderate volatility, long-term growth and principal preservation
- ◆ Typically has the majority of its allocation in fixed-income asset classes
- ◆ Smaller portion of the portfolio may include real estate, equities, commodities or other asset classes that contribute growth potential and diversification benefits
- ◆ Profile similar to that of a diversified bond portfolio alongside a smaller proportion of equities
- ◆ Appropriate for investors with a conservative risk tolerance

ASSET ALLOCATION¹



CHARACTERISTICS¹

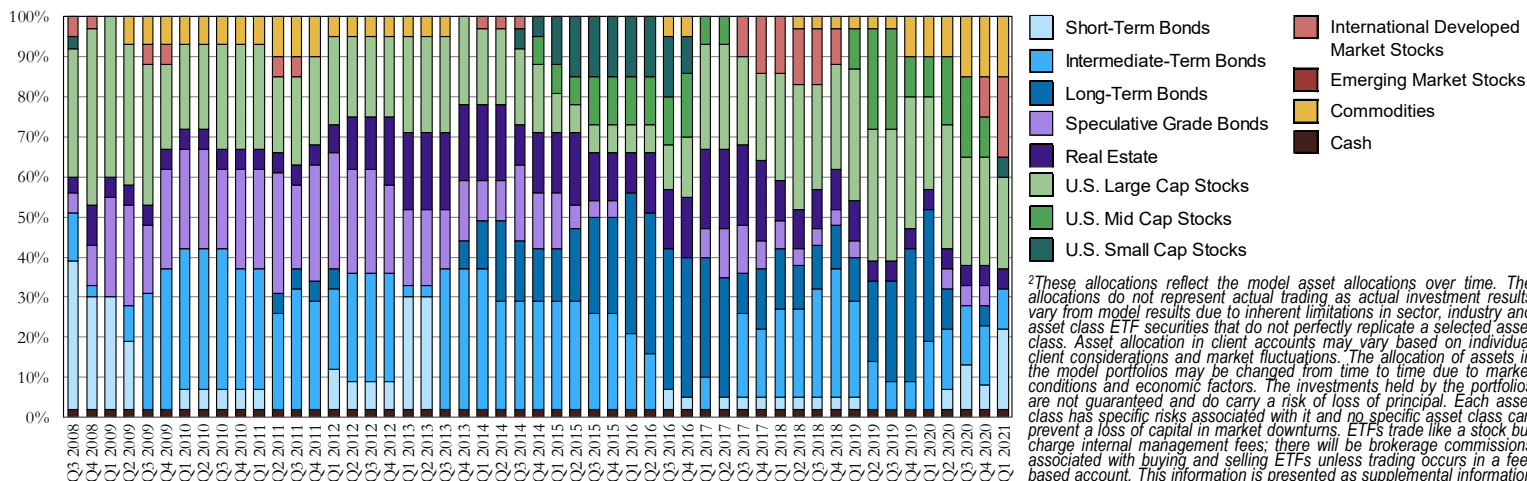
Weighted SEC Yield	1.2%
Number of Securities	23
Annual Turnover (3-Year Rolling)	102%

5 LARGEST HOLDINGS¹

SPDR® Developed World ex-US - SPDW	20.0%
iShares Gold Trust - IAU	11.0%
SPDR® S&P 500 Value - SPYV	10.1%
iShares MBS ETF - MBB	7.5%
iShares Short-Term Corporate Bond ETF - IGSB	6.8%

¹This information is presented as supplemental information to the disclosures required by the GIPS® standards. Information presented reflects wrap account composites with "Plus" strategies & taxable income (if applicable). Asset allocations shown represent the individual ETFs used in the model portfolios as of 1/19/2021 and do not represent the precise allocation of assets in an actual client account. Asset allocation in client accounts may vary based on individual client considerations and market fluctuations. The allocation of assets in the model portfolio may be changed from time to time due to market conditions and economic factors. The investments held by the portfolio are not guaranteed and do carry a risk of loss of principal. Each asset class has specific risks associated with it and no specific asset class can prevent a loss of capital in market downturns. The listing of "5 Largest Holdings" is not a complete list of all ETFs in the portfolio or which Confluence may be currently recommending. Application of the investment strategy as of a later date will likely result in changes to the listing. Individual client portfolios may differ, sometimes significantly, from these listings. Contact Confluence for a complete list of holdings. Yield data source: Morningstar. 30-day SEC yield for the model portfolio as of 1/19/2021. Annual turnover 3-year rolling calculated from sample accounts for periods ending 12/31/2020.

HISTORICAL MODEL ALLOCATIONS²



ABOUT CONFLUENCE INVESTMENT MANAGEMENT LLC

Confluence Investment Management is an independent Registered Investment Advisor located in St. Louis, Missouri, that provides professional portfolio management and advisory services to institutional and individual clients. Confluence's investment philosophy is based upon independent, fundamental research that integrates evaluation of market cycles, macroeconomics and geopolitical analysis with the firm's value-driven approach. The investment team's portfolio management philosophy begins by addressing risk and follows through by positioning clients to achieve income and growth objectives.

FIRST QUARTER 2021 INCOME WITH GROWTH MARKET OBSERVATIONS

- ◆ The economic recovery is still in the early stages and we maintain that the expected path will be long and slow moving.
- ◆ The Federal Reserve, along with other global central banks, will likely continue to be aggressively accommodative.
- ◆ Another round of fiscal stimulus is expected, which should be positive for equities.
- ◆ With the backdrop of an accommodative Fed and a low rate environment over the three-year forecast period, the weighting to equities is increased.
- ◆ The prior emphasis on cyclical equities is augmented by a tilt to value over growth.
- ◆ The prospect of a waning U.S. dollar in combination with a global economic recovery encourages an increased allocation to non-U.S. equities.
- ◆ Exposure to precious metals is retained, though a portion was repositioned to a broader basket of commodities given the advantages they confer during an economic recovery.

Several changes were implemented in the Income with Growth strategy this quarter. Positions in long-term bonds and speculative-grade bonds were eliminated and the intermediate-term bond exposure was trimmed. Almost all the proceeds funded a large increase in the short-term bond allocation. The short- and intermediate-term bond exposures now employ a bond ladder, with corporates in the shorter maturities and Treasuries used beyond four years. The position in U.S. large cap stocks was trimmed and mid-caps were eliminated in favor of exposure to small cap stocks and a doubling of the allocation to international developed market stocks. Last quarter, we introduced an emphasis on cyclical stocks through sector overweights of Industrials and Materials and dedicated exposure to the housing segment. This quarter, we further this emphasis by creating an overweight to Financials in lieu of Consumer Discretionary as well as introducing an overweight to value relative to growth at 60%/40% among all U.S. market capitalizations.

Information provided in this report is for educational and illustrative purposes only and should not be construed as individualized investment advice or a recommendation. The investment or strategy discussed may not be suitable for all investors. Investors must make their own decisions based on their specific investment objectives and financial circumstances. Opinions expressed are current as of the date shown and are subject to change.

PERFORMANCE COMPOSITE RETURNS (FOR PERIODS ENDING DECEMBER 31, 2020)

	Pure Gross-of-Fees ¹	Net-of-Fees ²	Benchmark (40stock/60bond)	Inflation	Calendar Year	Pure Gross-of-Fees ¹	Net-of-Fees ²	Benchmark (40stock/60bond)	Inflation	Difference (Gross-Bchmrk)	# of Portfolios	Composite Assets (000s)	Total Firm Assets (000s)	Composite 3yr Std Dev	Bchmrk 3yr Std Dev	Composite Dispersion
Since Inception**	11.1%	7.8%	8.9%	1.6%	2008**	4.5%	4.3%	2.4%	(0.0%)	2.2%	80	\$10,864	\$291,644	N/A	N/A	N/A
					2009	22.9%	19.3%	13.8%	1.1%	9.1%	14	\$4,276	\$533,832	N/A	N/A	N/A
10-Year*	9.5%	6.3%	8.1%	1.7%	2010	12.2%	8.9%	10.4%	1.6%	1.9%	25	\$9,337	\$751,909	N/A	N/A	0.3%
5-Year*	12.2%	8.8%	9.0%	1.6%	2011	4.9%	1.8%	5.9%	1.9%	(0.9%)	43	\$14,679	\$937,487	11.8%	7.6%	0.1%
3-Year*	13.5%	10.1%	9.3%	1.6%	2012	10.1%	6.9%	9.1%	2.0%	1.1%	53	\$20,940	\$1,272,265	7.7%	5.5%	0.1%
1-Year	25.8%	22.1%	12.6%	1.3%	2013	7.8%	4.6%	10.5%	2.0%	(2.7%)	50	\$20,925	\$1,955,915	7.0%	4.7%	0.2%
YTD	25.8%	22.1%	12.6%	1.3%	2014	13.1%	9.8%	9.3%	1.8%	3.8%	54	\$19,985	\$2,589,024	5.5%	3.9%	0.1%
QTD	8.9%	8.1%	5.2%	0.4%	2015	(0.8%)	(3.7%)	1.1%	1.4%	(1.9%)	70	\$27,222	\$3,175,419	6.1%	4.5%	0.1%
					2016	10.0%	6.7%	6.4%	1.5%	3.6%	27	\$5,776	\$4,413,659	7.0%	4.4%	0.1%
					2017	10.5%	7.2%	10.6%	1.8%	(0.1%)	47	\$11,956	\$5,944,479	6.4%	4.0%	0.1%
					2018	(3.8%)	(6.6%)	(1.5%)	2.0%	(2.3%)	52	\$10,840	\$5,486,737	6.3%	4.4%	0.1%
					2019	20.7%	17.1%	17.8%	1.6%	2.9%	61	\$13,757	\$7,044,708	6.2%	4.8%	0.1%
					2020	25.8%	22.1%	12.6%	1.3%	13.2%	94	\$24,340	\$6,889,798	10.0%	7.8%	0.2%

Portfolio Benchmark

The benchmark is calculated monthly and consists of a blend of 40% S&P 500 and 60% ML U.S. Corporate, Government, and Mortgage Bond Index (Source: Bloomberg). The benchmark was changed retroactively on 7/1/13 to be more simplified. The custom benchmark prior to 7/1/13 was calculated monthly and consisted of: ML U.S. Corporate, Government, and Mortgage 48%, S&P 500 30%, S&P 400 10%, FTSE NAREIT 5%, MSCI EAFE (gross) 5%, and ML T-Bill 2%. Inflation is provided as additional information and is represented by the U.S. 5-year TIP breakeven spread (Bloomberg: USGGBE05 Index), which had 3-year standard deviation as follows: 0.1% 2011, 0.1% 2012, 0.1% 2013, 0.1% 2014, 0.1% 2015, 0.1% 2016, 0.1% 2017, 0.1% 2018, 0.1% 2019, 0.1% 2020.

Confluence Investment Management LLC claims compliance with the Global investment Performance Standards (GIPS®) and has prepared and presented this report in compliance with the GIPS standards. Confluence Investment Management LLC has been independently verified for the periods August 1, 2008, through December 31, 2019. The verification report is available upon request. A firm that claims compliance with the GIPS standards must establish policies and procedures for complying with all the applicable requirements of the GIPS standards.

Verification provides assurance on whether the firm's policies and procedures related to composite maintenance, as well as the calculation, presentation, and distribution of performance, have been designed in compliance with the GIPS standards and have been implemented on a firm-wide basis. Verification does not provide assurance on the accuracy of any specific performance report.

GIPS® is a registered trademark of CFA Institute. CFA Institute does not endorse or promote this organization, nor does it warrant the accuracy or quality of the content contained herein.

The Income Taxable with Growth-Plus Composite was created on December 1, 2008. Confluence Investment Management LLC is an independent registered investment adviser. Results are based on fully discretionary accounts under management, including those accounts no longer with the firm. Past performance is not indicative of future results. The U.S. Dollar is the currency used to express performance. Returns are presented gross and net of all fees and include the reinvestment of all income.

¹ Pure gross returns are shown as supplemental information to the disclosures required by the GIPS® standards.

² Net-of-fee performance was calculated using the highest applicable annual bundled fee of 3.00% applied quarterly. This fee includes brokerage commissions, portfolio management, consulting services and custodial services. The Confluence fee schedule for this composite is as follows: 0.40% on the first \$500,000; 0.35% on the next \$500,000; and 0.30% over \$1,000,000. There are no incentive fees. Clients pay an all-inclusive fee based on a percentage of assets under management. The collection of fees produces a compounding effect on the total rate of return net of fees. Bundled fee accounts make up 100% of the composite for all periods. Actual investment advisory fees incurred by clients may vary. Wrap fee schedules are provided by independent wrap sponsors and are available upon request from the respective wrap sponsor.

A complete list of composite descriptions is available upon request. Policies for valuing investments, calculating performance, and preparing GIPS Reports are available upon request. The annual composite dispersion is an equal-weighted standard deviation, using gross-of-fee returns, calculated for the accounts in the composite for the entire year. The three-year annualized standard deviation measures the variability of the composite gross returns over the preceding 36-month period. The Income Taxable with Growth-Plus Composite contains fully discretionary Income Taxable with Growth-Plus wrap accounts. The Income Taxable with Growth strategy is implemented using ETFs and the investment objective is the pursuit of nominal returns (yield and growth) in excess of inflation, subject to the limitations of the risk constraint for the Income Taxable with Growth strategy. Although the portfolio typically has the majority of its allocation in taxable fixed income asset classes, a smaller portion of the portfolio may include real estate, equities, commodities or other asset classes. This minority allocation provides an aspect of growth potential, along with diversification benefits. This portfolio may be appropriate for investors with a conservative risk tolerance.

**Results shown for the year 2008 represent partial year performance from December 1, 2008, through December 31, 2008. N/A-Composite Dispersion: Information is not statistically meaningful due to an insufficient number of portfolios in the composite for the entire year. N/A-3yr Std Dev: Composite does not have 3 years of monthly performance history.

Confluence Asset Allocation Committee

Mark Keller, CFA
 Gregory Ellston
 William O'Grady
 David Miyazaki, CFA

Patty Dahl
 Kaisa Stucke, CFA
 Patrick Fearon-Hernandez, CFA

The Confluence Mission

Our mission is to provide our clients with superior investment solutions and exceptional client service with the highest standards of ethics and integrity. Our team of investment professionals is committed to delivering innovative products and sound, practical advice to enable investors to achieve their investment objectives.

FOR MORE INFORMATION CONTACT A MEMBER OF OUR SALES TEAM:

Wayne Knowles National Sales Director (314) 526-0914 wknowles@confluenceim.com	Ron Pond, CFA West Sr. Regional Sales Director (314) 526-0759 rpond@confluenceim.com	Steve Mikez North-Central Sr. Regional Sales Director (314) 526-0776 smikez@confluenceim.com	Michael Kelnosky North-Central Regional Sales Director (314) 526-0622 mkelnosky@confluenceim.com	Jason Gantt East Regional Sales Director (314) 526-0364 jganttt@confluenceim.com	Jim Taylor Mid-South Regional Sales Director (314) 526-0469 jtaylor@confluenceim.com
---	---	---	---	---	---