

**OBJECTIVE**

Combines objectives of growth and income exempt from federal taxation, with more emphasis on growth. Profile is similar to a portfolio with a blend of stocks and bonds.

**INVESTMENT PHILOSOPHY**

Asset allocation is a portfolio management process where various asset classes are combined in one portfolio. Properly implemented, asset allocation is a time-tested approach that addresses risk through diversification. The Confluence approach to asset allocation is different than traditional asset allocation approaches which rely on long-term historical averages for strategic capital market assumptions. Confluence recognizes that risk levels and return potential rise and fall over market and economic cycles. Therefore, we apply an adaptive process in which the Confluence team estimates the performance of 12 different asset classes in terms of risk, return and yield looking forward 3 years. This cyclical approach is not market *timing*. Rather, the intention is to remain within an acceptable risk profile, while changing the asset class mix to optimize return potential. We may adjust allocations in much shorter time frames, depending upon changing views of the marketplace and economy. Alternately, we may abstain from making significant allocation adjustments if we believe the existing posture remains optimal. The process may involve somewhat higher turnover than a more static strategic program, but usually involves less trading relative to tactical approaches.

The asset allocation portfolios utilize exchange-traded funds (ETFs). We may use ETFs that allow us to focus on or avoid particular industry sectors, bond maturities, commodities or countries.

**OVERVIEW**

- ◆ Combines objectives of growth and income, with more emphasis on growth
- ◆ The growth allocation may include equity asset classes ranging from small cap to large cap, with both domestic and international equities
- ◆ Commodities may be utilized for total return and diversification benefits
- ◆ Municipal bond ETFs will normally form the foundation to pursue income objectives
- ◆ Profile is similar to that of a portfolio with a blend of stocks and bonds
- ◆ Suitable for investors with a moderate risk tolerance

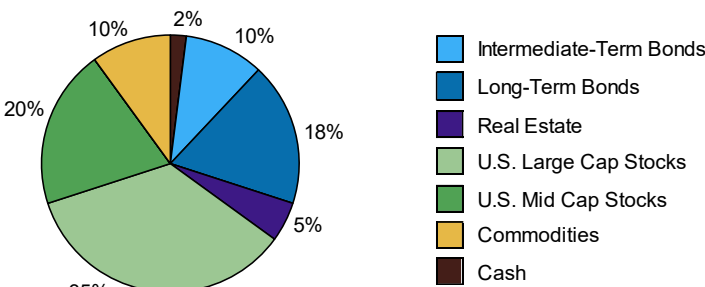
**CHARACTERISTICS<sup>1</sup>**

Weighted SEC Yield	1.7%
Number of Securities	17-21
Annual Turnover	50-90%

**5 LARGEST HOLDINGS<sup>1</sup>**

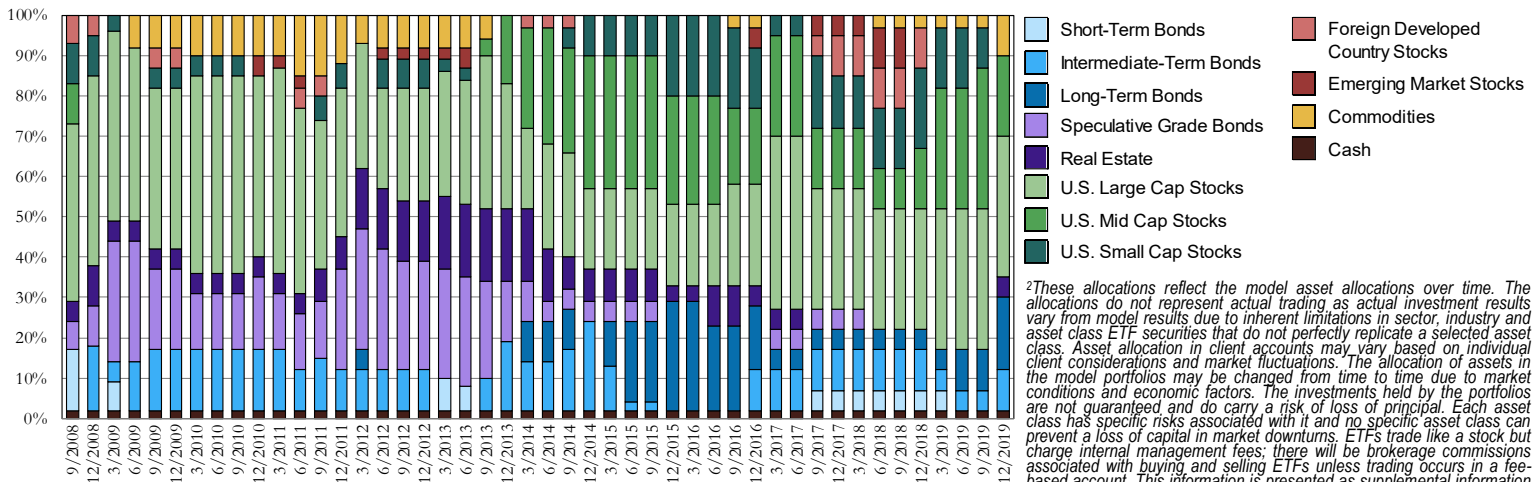
VanEck Vectors AMT-Free Long Muni ETF - MLN	19.2%
iShares S&P 500 Value ETF - IVE	14.0%
iShares S&P Mid-Cap 400 Value ETF - IJJ	12.0%
iShares S&P 500 Growth ETF - IVW	10.1%
iShares Gold Trust - IAU	10.0%

**ASSET ALLOCATION<sup>1</sup>**



<sup>1</sup>This information is presented as supplemental information to the disclosures required by the GIPS® standards. Information presented reflects wrap account composites with "Plus" strategies & taxable income (if applicable). Asset allocations shown represent the individual ETFs used in the model portfolios as of 10/15/19 and do not represent the precise allocation of assets in an actual client account. Asset allocation in client accounts may vary based on individual client considerations and market fluctuations. The allocation of assets in the model portfolio may be changed from time to time due to market conditions and economic factors. The investments held by the portfolio are not guaranteed and do carry a risk of loss of principal. Each asset class has specific risks associated with it and no specific asset class can prevent a loss of capital in market downturns. The listing of "5 Largest Holdings" is not a complete list of all ETFs in the portfolio or which Confluence may be currently recommending. Furthermore, application of the investment strategy as of a later date will likely result in changes to the listing. Contact Confluence for a complete list of holdings. Yield data source: Morningstar. 30-day SEC yield for the model portfolio as of 10/15/19.

**HISTORICAL MODEL ALLOCATIONS<sup>2</sup>**



<sup>2</sup>These allocations reflect the model asset allocations over time. The allocations do not represent actual trading, as actual investment results vary from model results due to inherent limitations in sector, industry and asset class ETF securities that do not perfectly replicate a selected asset class. Asset allocation in client accounts may vary based on individual client considerations and market fluctuations. The allocation of assets in the model portfolios may be changed from time to time due to market conditions and economic factors. The investments held by the portfolios are not guaranteed and do carry a risk of loss of principal. Each asset class has specific risks associated with it and no specific asset class can prevent a loss of capital in market downturns. ETFs trade like a stock but charge internal management fees; there will be brokerage commissions associated with buying and selling ETFs unless trading occurs in a fee-based account. This information is presented as supplemental information to the disclosures required by the GIPS® standards.

**ABOUT CONFLUENCE INVESTMENT MANAGEMENT LLC**

Confluence Investment Management is an independent Registered Investment Advisor located in St. Louis, Missouri that was founded in 2007. Confluence provides professional portfolio management and advisory services to institutional and individual clients. The firm's investment philosophy is based upon independent, fundamental research that integrates evaluation of market cycles, macroeconomics and geopolitical analysis with the firm's value-driven approach. Confluence's portfolio management philosophy begins by assessing risk and follows through by positioning clients to achieve their income and growth objectives.

## FOURTH QUARTER 2019 GROWTH & INCOME TAX-EXEMPT MARKET OBSERVATIONS

- ◆ The U.S. Federal Reserve and other central banks are expected to continue their accommodative postures, especially considering issues stemming from trade impediments.
- ◆ While we retain a relatively sanguine view of the U.S. economy over our three-year cyclical forecast period, we recognize there is increased potential for an economic downturn.
- ◆ Each strategy reflects a more neutral posture, with risk exposure being trimmed and all residing in the U.S.
- ◆ Within equities, our style guidance has shifted to 60% value/40% growth.
- ◆ The prospect of trade-based earnings compression leads us to lean toward firms with larger market capitalizations, particularly those with more defensive characteristics.
- ◆ Heightened geopolitical uncertainty and the potential for elevated volatility in global equity markets encourages an increased allocation to long-term U.S. Treasuries and gold.

The allocations for the Growth & Income Tax-Exempt strategy now reflect a more neutral posture than last quarter. We increased the municipal bond exposure in both the intermediate-term and long-term maturities due to our expectations for a return to a normal slope of the yield curve. We retain the laddered maturity structure for intermediate-term municipal bonds. Among stocks, all risk assets remain in the U.S., and REITs occupy a modest allocation given the diversified income stream they afford. Large cap stocks dominate the equity exposure, with a tilt in favor of value versus growth. In addition, we introduced an allocation to the quality factor focusing on profitability, earnings quality and lower leverage. Within large cap sectors, we established overweights to both Consumer Staples and Health Care for their favorable valuations and more defensive characteristics. Although we trimmed a portion of the Technology sector, it remains slightly overweight. We increased the gold allocation as a hedge against geopolitical risks and for its attractiveness should the U.S. dollar decline or global equity markets experience increased volatility.

Information provided in this report is for educational and illustrative purposes only and should not be construed as individualized investment advice or a recommendation. The investment or strategy discussed may not be suitable for all investors. Investors must make their own decisions based on their specific investment objectives and financial circumstances. Opinions expressed are current as of the date shown and are subject to change.

### PERFORMANCE COMPOSITE RETURNS (FOR PERIODS ENDING SEPTEMBER 30, 2019)

	Pure Gross-of-Fees <sup>1</sup>	Net-of-Fees <sup>2</sup>	Benchmark (70stock/30muni)	Inflation	Pure Gross-of-Fees <sup>1</sup>	Net-of-Fees <sup>2</sup>	Benchmark (70stock/30muni)	Inflation	Difference (Gross-Bchmrk)	# of Portfolios	Composite Assets (000s)	Total Firm Assets (000s)	Composite 3yr Std Dev	Bchmrk 3yr Std Dev	Composite Dispersion	
Since Inception**	6.7%	3.5%	8.8%	1.6%	2008**	(24.3%)	(25.1%)	(22.2%)	(0.0%)	(2.1%)	9	\$1,847	\$291,644	N/A	N/A	N/A
10-Year*	8.5%	5.3%	10.7%	1.8%	2009	25.7%	21.9%	23.4%	1.1%	2.3%	62	\$13,297	\$533,832	N/A	N/A	0.3%
5-Year*	7.5%	4.3%	8.8%	1.7%	2010	11.7%	8.4%	11.5%	1.6%	0.2%	87	\$19,644	\$751,909	N/A	N/A	0.1%
3-Year*	7.3%	4.1%	10.4%	1.8%	2011	1.2%	(1.8%)	5.1%	1.9%	(3.9%)	78	\$19,329	\$937,487	15.6%	13.0%	0.1%
1-Year	1.9%	(1.1%)	6.0%	1.6%	2012	11.0%	7.7%	13.5%	2.0%	(2.4%)	86	\$22,080	\$1,272,265	11.9%	10.3%	0.1%
YTD	15.0%	12.4%	16.6%	1.2%	2013	11.5%	8.2%	20.8%	2.0%	(9.3%)	93	\$24,622	\$1,955,915	9.7%	8.3%	0.2%
QTD	1.0%	0.3%	1.7%	0.4%	2014	12.4%	9.1%	12.6%	1.8%	(0.2%)	66	\$17,945	\$2,589,024	6.9%	6.5%	0.1%
					2015	0.9%	(2.1%)	2.2%	1.4%	(1.4%)	68	\$18,325	\$3,175,419	7.4%	7.4%	0.2%
					2016	10.3%	7.0%	8.5%	1.5%	1.7%	45	\$6,439	\$4,413,659	7.8%	7.3%	0.1%
					2017	15.5%	12.0%	16.7%	1.8%	(1.2%)	50	\$7,999	\$5,944,479	7.2%	6.8%	0.1%
					2018	(7.6%)	(10.3%)	(2.5%)	2.0%	(5.0%)	44	\$6,392	\$5,486,737	8.6%	7.5%	0.1%

\*Average annualized returns  
\*\*Inception is 9/1/2008

#### Portfolio Benchmark

The benchmark is calculated monthly and consists of a blend of 70% S&P 500 and 30% ML Municipal Bond Index (Source: Bloomberg)

The benchmark was changed retroactively on 7/1/13 to be more simplified. The custom benchmark prior to 7/1/13 was calculated monthly and consisted of: ML Municipal 38%, S&P 500 30%, S&P 400 15%, Russell 2000 10%, MSCI EAFE (gross) 5%, and ML T-Bill 2%. Inflation is provided as additional information and is represented by the U.S. 5-year TIP breakeven spread (Bloomberg: USGGBE05 Index), which had 3-year standard deviation as follows: 0.1% 2011, 0.1% 2012, 0.1% 2013, 0.1% 2014, 0.1% 2015, 0.1% 2016, 0.1% 2017, 0.1% 2018.

Confluence claims compliance with the Global Investment Performance Standards (GIPS®) and has prepared and presented this report in compliance with the GIPS standards. Confluence has been independently verified for the periods of 8/1/2008 through 12/31/2017. A copy of the verification report is available upon request. Verification assesses whether: 1. the firm has complied with all the composite construction requirements of the GIPS standards on a firm-wide basis, and 2. the firm's policies and procedures are designed to calculate and present performance in compliance with the GIPS standards. Verification does not ensure the accuracy of any specific composite presentation.

The Growth & Income Tax-Exempt - Plus Composite was created on September 1, 2008. Confluence Investment Management LLC is an independent registered investment adviser. Results are based on fully discretionary accounts under management, including those accounts no longer with the firm. Past performance is not indicative of future results. The U.S. Dollar is the currency used to express performance. Returns are presented gross and net of all fees and include the reinvestment of all income.

<sup>1</sup> Pure gross returns are shown as supplemental information to the disclosures required by the GIPS® standards.

<sup>2</sup> Net of fee performance was calculated using the highest applicable annual bundled fee of 3.00% applied quarterly. This fee includes brokerage commissions, portfolio management, consulting services and custodial services. The Confluence fee schedule for this composite is as follows: 0.40% on the first \$500,000; 0.35% on the next \$500,000; and 0.30% over \$1,000,000. There are no incentive fees. Clients pay an all-inclusive fee based on a percentage of assets under management. The collection of fees produces a compounding effect on the total rate of return net of fees. Bundled fee accounts make up 100% of the composite for all periods. Actual investment advisory fees incurred by clients may vary. Wrap fee schedules are provided by independent wrap sponsors and are available upon request from the respective wrap sponsor.

A complete list of composite descriptions is available upon request. Additional information regarding policies for valuing portfolios, calculating performance, and preparing compliant presentations are available upon request. The annual composite dispersion is an equal-weighted standard deviation calculated for accounts in the composite for the entire year. The Growth & Income Tax-Exempt - Plus Composite contains fully discretionary Growth & Income Tax-Exempt - Plus wrap accounts. The Growth & Income Tax-Exempt strategy is implemented using ETFs and the investment objective is the pursuit of nominal returns (yield and growth) in excess of inflation, subject to the limitations of the risk constraint for the Growth & Income Tax-Exempt strategy. The growth allocation may include equity asset classes ranging from small cap to large cap, with both domestic and international equities. Commodities may be utilized for total return as well as diversification benefits. Fixed-income and real estate allocations will normally form the foundation to pursue income objectives. This portfolio may be appropriate for investors with a moderate risk tolerance.

\*\*Results shown for the year 2008 represent partial period performance from September 1, 2008 through December 31, 2008. N/A - Composite Dispersion: Information is not statistically meaningful due to an insufficient number of portfolios in the composite for the entire year. N/A - 3yr Std Dev: Composite does not have 3 years of monthly performance history.

#### Confluence Asset Allocation Committee

Mark Keller, CFA	Patty Dahl
William O'Grady	Kaisa Stucke, CFA
Gregory Ellston	Patrick Fearon-Hernandez, CFA
David Miyazaki, CFA	

#### The Confluence Mission

Our mission is to provide our clients with superior investment solutions and exceptional client service with the highest standards of ethics and integrity. Our team of investment professionals is committed to delivering innovative products and sound, practical advice to enable investors to achieve their investment objectives.

#### FOR MORE INFORMATION CONTACT ONE OF OUR SALES TEAM MEMBERS:

Wayne Knowles National Sales Director   Southeast (919) 604-7604 wknowles@confluenceim.com	Ron Pond Regional Mktg Rep   Southwest (858) 699-7945 rpond@confluenceim.com	Steve Mikez Regional Mktg Rep   North-Central (480) 529-8741 smikez@confluenceim.com	Jason Gantt Regional Mktg Rep   Northeast (203) 733-9470 jgantt@confluenceim.com	Jim Taylor Regional Mktg Rep   Mid-South (630) 605-7194 jtaylor@confluenceim.com
---	---	---	---	---