

OBJECTIVE

Combines objectives of growth and income, with more emphasis on growth.

INVESTMENT PHILOSOPHY

Asset allocation is a portfolio management process where various asset classes are combined in one portfolio. Properly implemented, asset allocation is a time-tested approach that addresses risk through diversification. The Confluence approach to asset allocation is different than traditional asset allocation approaches which rely on long-term historical averages for strategic capital market assumptions. Confluence recognizes that risk levels and return potential rise and fall over market and economic cycles. Therefore, we apply an adaptive process in which the Confluence team estimates the performance of 12 different asset classes in terms of risk, return, and yield looking forward 3 years. This cyclical approach is not market *timing*. Rather, the intention is to remain within an acceptable risk profile, while changing the asset class mix to optimize return potential. We may adjust allocations in much shorter time frames, depending upon changing views of the marketplace and economy. Alternately, we may abstain from making significant allocation adjustments if we believe the existing posture remains optimal. The process may involve somewhat higher turnover than a more static strategic program, but usually involves less trading relative to tactical approaches.

The asset allocation portfolios utilize exchange-traded funds (ETFs). We may use ETFs that allow us to focus on or avoid particular industry sectors, bond maturities, commodities, or countries.

OVERVIEW

- ◆ Combines objectives of growth and income, with more emphasis on growth
- ◆ The growth allocation may include equity asset classes ranging from small cap to large cap, with both domestic and international equities
- ◆ Commodities may be utilized for total return and diversification benefits
- ◆ Fixed income and real estate will normally form the foundation to pursue income objectives
- ◆ Profile is similar to that of a portfolio with a blend of stocks and bonds
- ◆ Appropriate for investors with a moderate risk tolerance
- ◆ Strategy assets: \$877.4 million¹

¹ Total strategy assets include assets under management (AUM) and assets under advisement (AUA). As of 12/31/22, AUM = \$157.4 million and AUA = \$720.0 million.

CURRENT PORTFOLIO²

(As of 7/20/2023 rebalance)

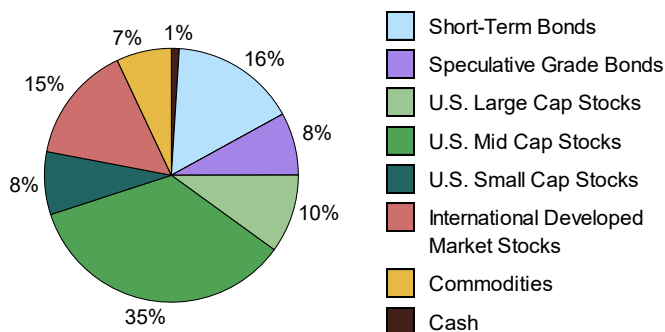
CHARACTERISTICS

Weighted SEC Yield	2.6%
Volatility Ceiling	14.0%
Number of Securities	18
Annual Turnover (3-Year Rolling as of 12/31/22)	90%

5 LARGEST HOLDINGS

SPDR [®] S&P 400 Mid Cap Value ETF - MDYV	14.0%
SPDR [®] Portfolio Developed World ex-US ETF - SPDW	12.7%
SPDR [®] S&P 400 Mid Cap Growth ETF - MDYG	12.2%
BondBloxx 1-Year Target UST - XONE	11.2%
Invesco S&P Mid Cap Quality ETF - XMHQ	8.8%

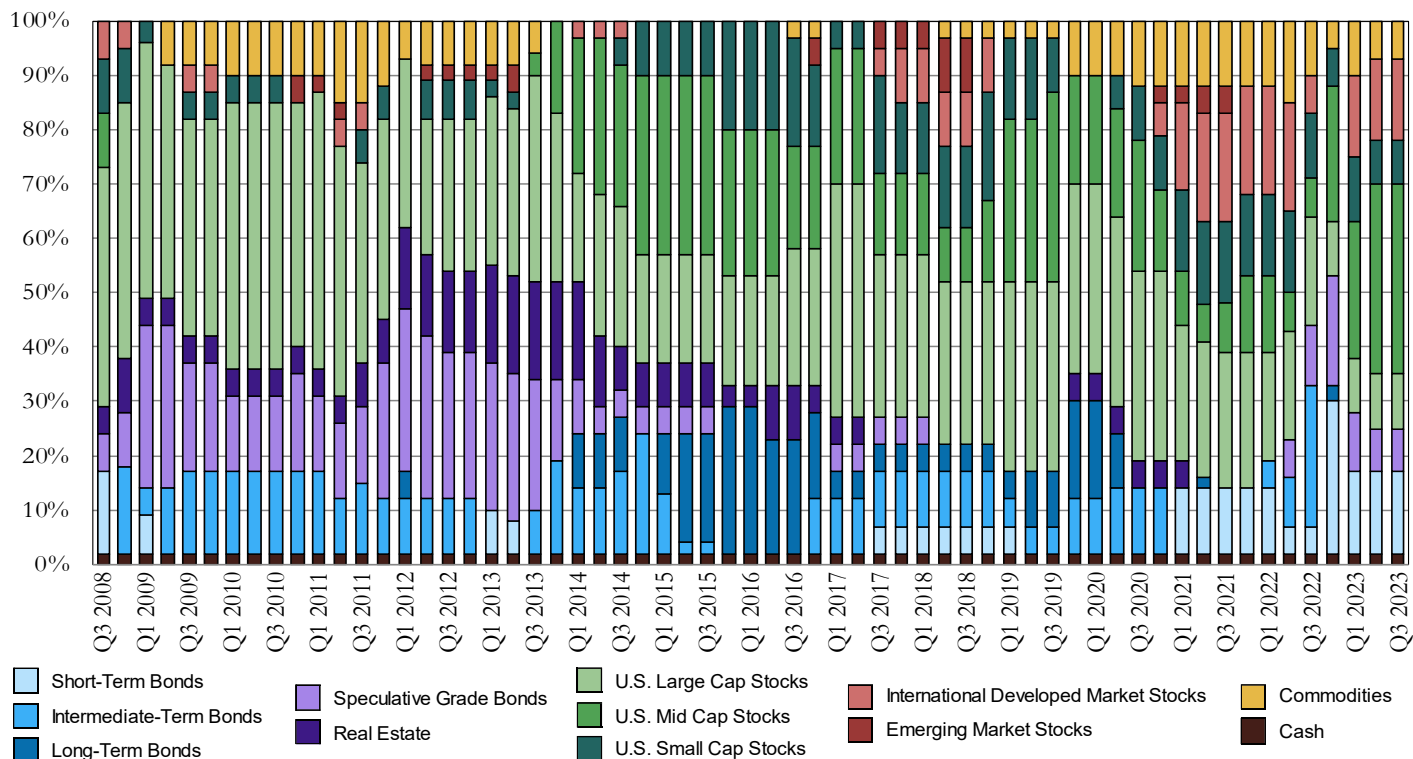
ASSET ALLOCATION



RECENT PORTFOLIO CHANGES³

The Growth & Income strategy remains positioned for a near-term mild recession followed by a recovery and potential for an economic expansion within the three-year forecast period. This posture has been in place throughout this year and remains unchanged except for a reduction in the cash buffer to 1% in favor of higher-yielding one-year Treasuries. Beyond this, we implemented two changes within the allocations this quarter. The first was in the short-term bond allocation, where greater emphasis was placed in the ultra-short segment through a one-year Treasury selection. The other change was introducing an overweight to Japan in the international developed market exposure.

HISTORICAL MODEL ALLOCATIONS



PERFORMANCE COMPOSITE RETURNS⁴ (FOR PERIODS ENDING JUNE 30, 2023)

	Since Inception**	10-Year*	5-Year*	3-Year*	1-Year	YTD	QTD
Growth & Income (Taxable)							
<i>Pure Gross-of-Fees⁵</i>	7.9%	9.4%	9.0%	10.6%	7.7%	6.7%	3.2%
<i>Max Net-of-Fees⁶</i>	4.7%	6.1%	5.8%	7.4%	4.6%	5.1%	2.5%
Benchmark (70stock/30bond)	8.7%	9.6%	9.1%	8.9%	13.2%	12.3%	5.8%
Inflation	1.8%	1.9%	2.1%	2.5%	2.4%	1.2%	0.5%

Calendar Year	Pure Gross-of-Fees ⁵	Max Net-of-Fees ⁶	Benchmark (70stock/30bond)	Inflation	Difference (Gross-Benchmark)	# of Portfolios	Composite Assets (000s)	Total Firm Assets (000s)	Composite 3yr Std Dev	Benchmark 3yr Std Dev	Composite Dispersion
2008**	(24.1%)	(24.9%)	(19.9%)	(0.0%)	(4.2%)	17	\$2,070	\$291,644	N/A	N/A	N/A
2009	26.4%	22.7%	20.2%	1.1%	6.2%	274	\$40,177	\$533,832	N/A	N/A	0.1%
2010	13.1%	9.8%	12.9%	1.6%	0.3%	474	\$69,570	\$751,909	N/A	N/A	0.2%
2011	1.3%	(1.7%)	4.1%	1.9%	(2.8%)	473	\$76,475	\$937,487	15.7%	13.1%	0.2%
2012	11.4%	8.1%	12.6%	2.0%	(1.1%)	483	\$88,475	\$1,272,265	11.8%	10.2%	0.2%
2013	11.7%	8.4%	21.0%	2.0%	(9.3%)	483	\$99,018	\$1,955,915	9.7%	8.2%	0.1%
2014	13.6%	10.3%	11.5%	1.8%	2.1%	331	\$71,109	\$2,589,024	7.2%	6.3%	0.2%
2015	(0.9%)	(3.8%)	1.3%	1.4%	(2.2%)	442	\$85,189	\$3,175,419	7.8%	7.4%	0.1%
2016	12.2%	8.9%	9.2%	1.5%	3.0%	187	\$34,169	\$4,413,659	8.5%	7.4%	0.2%
2017	15.5%	12.1%	16.1%	1.8%	(0.6%)	259	\$63,074	\$5,944,479	7.7%	6.8%	0.1%
2018	(8.1%)	(10.8%)	(2.8%)	2.0%	(5.2%)	289	\$60,638	\$5,486,737	8.9%	7.5%	0.1%
2019	21.9%	18.3%	24.6%	1.6%	(2.7%)	292	\$74,376	\$7,044,708	9.8%	8.3%	0.2%
2020	22.9%	19.3%	15.8%	1.3%	7.1%	295	\$94,100	\$6,889,798	14.6%	13.0%	0.6%
2021	17.0%	13.5%	18.9%	2.6%	(2.0%)	354	\$123,621	\$7,761,687	13.4%	12.1%	0.2%
2022	(9.7%)	(12.4%)	(16.4%)	2.8%	6.7%	466	\$133,491	\$6,931,635	14.5%	15.5%	0.1%

*Average annualized returns

**Inception is 9/1/2008

See performance disclosures on last page.

Portfolio Benchmark

70% stock/30% bond – Custom benchmark is calculated monthly and consists of a blend of 70% S&P 500 and 30% ICE BofA U.S. Corporate, Government, and Mortgage Bond Index. (Source: Bloomberg)

Confluence Asset Allocation Committee

Mark Keller, CFA
Gregory Ellston

William O'Grady
David Miyazaki, CFA

Patty Dahl
Kaisa Stucke, CFA

Patrick Fearon-Hernandez, CFA

FOR MORE INFORMATION CONTACT A MEMBER OF OUR SALES TEAM:

Ron Pond, CFA | *Northwest*
Director of Sales
(314) 526-0759
rpond@confluenceim.com

Jason Gantt | *East*
Sr. Regional Sales Director
(314) 526-0364
jgantt@confluenceim.com

Jim Taylor | *Mid-South*
Regional Sales Director
(314) 526-0469
jtaylor@confluenceim.com

Denis O'Grady | *East & Mid-South*
Regional Sales Associate (Internal)
(314) 743-5294
dogrady@confluenceim.com

Wayne Knowles | *ID, MT, WY*
Advisory Director
(314) 526-0914
wknowles@confluenceim.com

Steve Mikez | *Southwest*
Sr. Regional Sales Director
(314) 526-0776
smikez@confluenceim.com

Michael Kelnosky | *North-Central*
Regional Sales Director
(314) 526-0622
mkelnosky@confluenceim.com

Matt Winter | *Southwest & North-Central*
Regional Sales Associate (Internal)
(314) 526-0522
mwinter@confluenceim.com

DISCLOSURES

² **Current Portfolio**—Information presented reflects wrap account composites with taxable income (if applicable). Asset allocations shown represent the individual ETFs used in the model portfolios as of 7/20/23 and do not represent the precise allocation of assets in an actual client account. Asset allocation in client accounts may vary based on individual client considerations and market fluctuations. The investments held by the portfolio are not guaranteed and do carry a risk of loss of principal. Each asset class has specific risks associated with it and no specific asset class can prevent a loss of capital in market downturns. Individual client portfolios may differ, sometimes significantly, from these listings. Yield data source: Morningstar. 30-day SEC yield of the model portfolio as of 7/20/23. Annual turnover 3-year rolling calculated from sample accounts for periods ending 12/31/2022.

³ **Recent Portfolio Changes**—The investment or strategy may not be suitable for all investors. Investors must make their own decisions based on their specific investment objectives and financial circumstances.

⁴ **Performance Composite Returns**—Confluence Investment Management LLC claims compliance with the Global Investment Performance Standards (GIPS®) and has prepared and presented this report in compliance with the GIPS standards. Confluence Investment Management LLC has been independently verified for the periods August 1, 2008, through December 31, 2021. The verification report is available upon request. A firm that claims compliance with the GIPS standards must establish policies and procedures for complying with all the applicable requirements of the GIPS standards.

Verification provides assurance on whether the firm's policies and procedures related to composite maintenance, as well as the calculation, presentation, and distribution of performance, have been designed in compliance with the GIPS standards and have been implemented on a firm-wide basis. Verification does not provide assurance on the accuracy of any specific performance report.

GIPS® is a registered trademark of CFA Institute. CFA Institute does not endorse or promote this organization, nor does it warrant the accuracy or quality of the content contained herein. The Growth and Taxable Income-Plus strategy was inceptioned on September 1, 2008, and the Growth and Taxable Income-Plus Composite was created on September 1, 2008. Confluence Investment Management LLC is an independent registered investment adviser. Results are based on fully discretionary accounts under management, including those accounts no longer with the firm. Past performance is not indicative of future results. The U.S. Dollar is the currency used to express performance. Returns are presented gross and net of all fees and include the reinvestment of all income.

⁵ Pure gross returns are shown as supplemental information to the disclosures required by the GIPS® standards.

⁶ Net-of-fee performance was calculated using the highest applicable annual bundled fee of 3.00% applied quarterly. This fee includes brokerage commissions, portfolio management, consulting services and custodial services. The Confluence fee schedule for this composite: 0.40% on the first \$500,000; 0.35% on the next \$500,000; 0.30% over \$1,000,000. There are no incentive fees. Clients pay an all-inclusive fee based on a percentage of assets under management. The collection of fees produces a compounding effect on the total rate of return net of fees. Bundled fee accounts make up 100% of the composite for all periods. Actual investment advisory fees incurred by clients may vary. Wrap fee schedules are provided by independent wrap sponsors and are available upon request from the respective wrap sponsor.

A complete list of composite descriptions is available upon request. Policies for valuing investments, calculating performance, and preparing GIPS Reports are available upon request. The annual composite dispersion is an equal-weighted standard deviation, using gross-of-fee returns, calculated for the accounts in the composite for the entire year. The three-year annualized standard deviation measures the variability of the composite gross returns over the preceding 36-month period. The Growth & Taxable Income-Plus Composite contains fully discretionary Growth & Taxable Income-Plus wrap accounts. The Growth & Income Taxable strategy is implemented using ETFs and the investment objective is the pursuit of nominal returns (yield and growth) in excess of inflation, subject to the limitations of the risk constraint for the Growth & Income Taxable strategy. The growth allocation may include equity asset classes ranging from small cap to large cap, with both domestic and international equities. Commodities may be utilized for total return as well as diversification benefits. Fixed income and real estate allocations will normally form the foundation to pursue taxable income objectives. This portfolio may be appropriate for investors with a moderate risk tolerance.

**Results shown for the year 2008 represent partial period performance from September 1, 2008, through December 31, 2008.

N/A-Composite Dispersion: Information is not statistically meaningful due to an insufficient number of portfolios in the composite for the entire year. N/A-3yr Std Dev: Composite does not have 3 years of monthly performance history.

Inflation is provided as additional information and is represented by the U.S. 5-year TIP breakeven spread (Bloomberg: USGGBE05 Index), which had 3-year standard deviation as follows: 0.1% 2011, 0.1% 2012, 0.1% 2013, 0.1% 2014, 0.1% 2015, 0.1% 2016, 0.1% 2017, 0.1% 2018, 0.1% 2019, 0.1% 2020, 0.2% 2021, 0.2% 2022.