

OBJECTIVE

Combines objectives of growth and income, with more emphasis on growth. Profile is similar to a portfolio with a blend of stocks and bonds.

INVESTMENT PHILOSOPHY

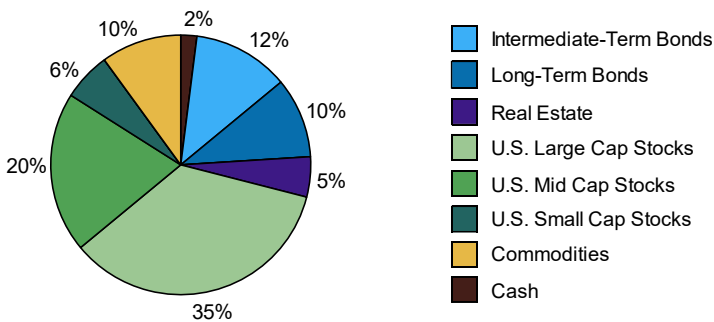
Asset allocation is a portfolio management process where various asset classes are combined in one portfolio. Properly implemented, asset allocation is a time-tested approach that addresses risk through diversification. The Confluence approach to asset allocation is different than traditional asset allocation approaches which rely on long-term historical averages for strategic capital market assumptions. Confluence recognizes that risk levels and return potential rise and fall over market and economic cycles. Therefore, we apply an adaptive process in which the Confluence team estimates the performance of 12 different asset classes in terms of risk, return and yield looking forward three years. This cyclical approach is not market *timing*. Rather, the intention is to remain within an acceptable risk profile, while changing the asset class mix to optimize return potential. We may adjust allocations in much shorter time frames, depending upon changing views of the marketplace and economy. Alternately, we may abstain from making significant allocation adjustments if we believe the existing posture remains optimal. The process may involve somewhat higher turnover than a more static strategic program, but usually involves less trading relative to tactical approaches.

The asset allocation portfolios utilize exchange-traded funds (ETFs). We may use ETFs that allow us to focus on or avoid particular industry sectors, bond maturities, commodities or countries.

OVERVIEW

- ◆ Combines objectives of growth and income, with more emphasis on growth
- ◆ The growth allocation may include equity asset classes ranging from small cap to large cap, with both domestic and international equities
- ◆ Commodities may be utilized for total return and diversification benefits
- ◆ Fixed income and real estate will normally form the foundation to pursue income objectives
- ◆ Profile is similar to that of a portfolio with a blend of stocks and bonds
- ◆ Suitable for investors with a moderate risk tolerance

ASSET ALLOCATION¹



CHARACTERISTICS¹

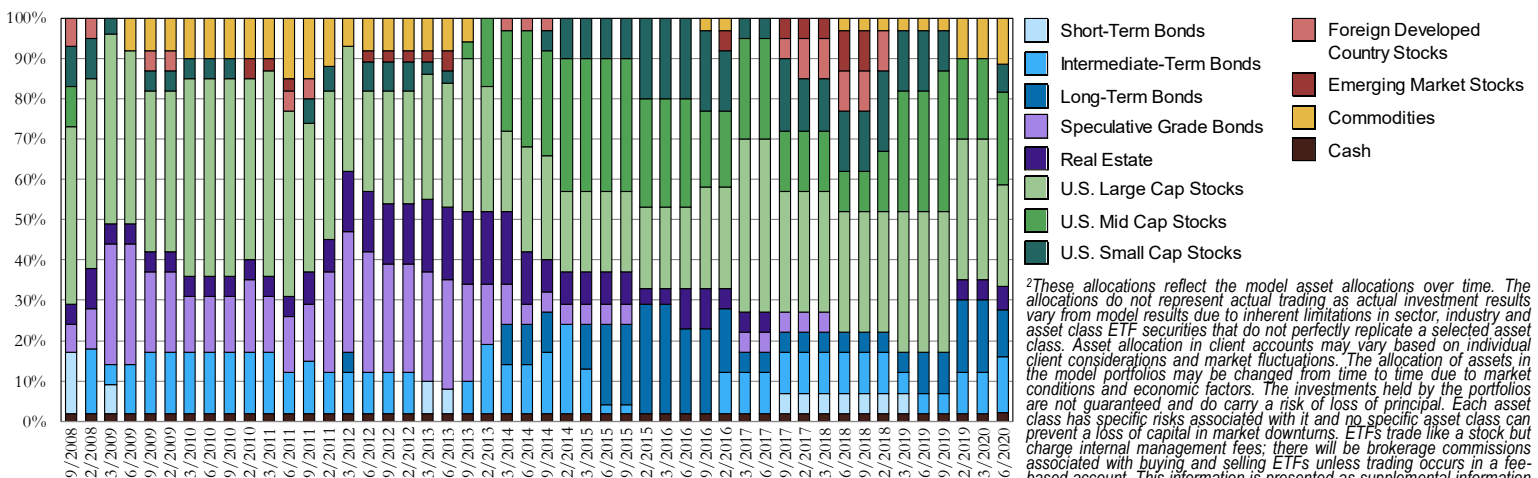
Weighted SEC Yield	2.0%
Number of Securities	17-21
Annual Turnover (3-Year Rolling)	78%

5 LARGEST HOLDINGS¹

SPDR Portfolio S&P 500 Growth ETF - SPYG	13.7%
SPDR S&P 400 Mid Cap Growth ETF - MDYG	12.0%
iShares Gold Trust - IAU	10.0%
SPDR Portfolio S&P 500 Value ETF - SPYV	9.1%
SPDR S&P 400 Mid Cap Value ETF - MDYV	8.0%

¹This information is presented as supplemental information to the disclosures required by the GIPS® standards. Information presented reflects wrap account composites with "Plus" strategies & taxable income (if applicable). Asset allocations shown represent the individual ETFs used in the model portfolios as of 3/30/20 and do not represent the precise allocation of assets in an actual client account. Asset allocation in client accounts may vary based on individual client considerations and market fluctuations. The allocation of assets in the model portfolio may be changed from time to time due to market conditions and economic factors. The investments held by the portfolio are not guaranteed and do carry a risk of loss of principal. Each asset class has specific risks associated with it and no specific asset class can prevent a loss of capital in market downturns. The listing of "5 Largest Holdings" is not a complete list of all ETFs in the portfolio or which Confluence may be currently recommending. Application of the investment strategy as of a later date will likely result in changes to the listing. Individual client portfolios may differ, sometimes significantly, from these listings. Contact Confluence for a complete list of holdings. Yield data source: Morningstar. 30-day SEC yield for the model portfolio as of 3/30/20. Annual turnover 3-year rolling calculated from sample accounts for periods ending 12/31/2019.

HISTORICAL MODEL ALLOCATIONS²



²These allocations reflect the model asset allocations over time. The allocations do not represent actual trading, as actual investment results vary from model results due to inherent limitations in sector, industry and asset class ETF securities that do not perfectly replicate a selected asset class. Asset allocation in client accounts may vary based on individual client considerations and market fluctuations. The allocation of assets in the model portfolios may be changed from time to time due to market conditions and economic factors. The investments held by the portfolios are not guaranteed and do carry a risk of loss of principal. Each asset class has specific risks associated with it and no specific asset class can prevent a loss of capital in market downturns. ETFs trade like a stock but charge internal management fees; there will be brokerage commissions associated with buying and selling ETFs unless trading occurs in a fee-based account. This information is presented as supplemental information to the disclosures required by the GIPS® standards.

ABOUT CONFLUENCE INVESTMENT MANAGEMENT LLC

Confluence Investment Management is an independent Registered Investment Advisor located in St. Louis, Missouri, that provides professional portfolio management and advisory services to institutional and individual clients. Confluence's investment philosophy is based upon independent, fundamental research that integrates evaluation of market cycles, macroeconomics and geopolitical analysis with the firm's value-driven approach. The investment team's portfolio management philosophy begins by addressing risk and follows through by positioning clients to achieve income and growth objectives.

SECOND QUARTER 2020 GROWTH & INCOME TAXABLE MARKET OBSERVATIONS

- ◆ The prospect of a recession in the U.S. is nearly a foregone conclusion. The depth will likely be severe, but the duration could be brief.
- ◆ Actions over the past two weeks by the U.S. Federal Reserve should help mitigate the economic crisis, potentially avoiding problems faced in past downturns.
- ◆ The stimulus package signed into law on March 27 offers further assistance for lessening the duration of the contraction.
- ◆ Our three-year forecast is for a recovery and even the potential for expansion toward the end of the forecast period.
- ◆ Risk assets, especially U.S. equities and even corporate bonds, are at attractive valuations in our view.
- ◆ Each strategy now has elevated exposure to equities with a tilt toward growth over value.
- ◆ Though long-term Treasuries have likely run their course, the use of gold as a stabilizer for the strategies remains appropriate.

The Growth & Income strategy's former risk-neutral posture with equity stabilizers was changed this quarter. Almost half of the long-term bond exposure was eliminated, with the proceeds assigned to intermediate-term bonds and U.S. small cap equities. In the intermediate bond segment, the strategy retains the laddered maturity structure and incorporates maturity-term Treasury ETFs toward the back end of the intermediate maturity segment. Among U.S. equities, a tilt now exists in favor of growth over value and we increase the allocation to the quality factor focusing on profitability, earnings quality, and lower leverage. Within large cap sectors, we establish an overweight to Consumer Discretionary, given expectations for performance once constrained demand from COVID-19 is revived, while maintaining the overweight to Technology and Communication Services. We initiate a modest position in small cap stocks, further evidence of our risk-tolerance for the strategy over the three-year forecast period. However, we retain the stabilizer of gold owing to its potential to reduce overall strategy risk accruing from geopolitical uncertainty, along with the opportunity it affords in the event of continued global equity market volatility.

Information provided in this report is for educational and illustrative purposes only and should not be construed as individualized investment advice or a recommendation. The investment or strategy discussed may not be suitable for all investors. Investors must make their own decisions based on their specific investment objectives and financial circumstances. Opinions expressed are current as of the date shown and are subject to change.

PERFORMANCE COMPOSITE RETURNS (FOR PERIODS ENDING MARCH 31, 2020)

	Pure Gross-of-Fees ¹	Net-of-Fees ²	Benchmark (70stock/30bond)	Inflation	Calendar Year	Pure Gross-of-Fees ¹	Net-of-Fees ²	Benchmark (70stock/30bond)	Inflation	Difference (Gross-Bchmrk)	# of Portfolios	Composite Assets (000s)	Total Firm Assets (000s)	Composite 3yr Std Dev	Bchmrk 3yr Std Dev	Composite Dispersion
Since Inception**	6.0%	2.8%	7.5%	1.6%	2008**	(24.1%)	(24.9%)	(19.9%)	(0.0%)	(4.2%)	17	\$2,070	\$291,644	N/A	N/A	N/A
					2009	26.4%	22.7%	20.2%	1.1%	6.2%	274	\$40,177	\$533,832	N/A	N/A	0.1%
10-Year*	7.0%	3.8%	8.7%	1.7%	2010	13.1%	9.8%	12.9%	1.6%	0.3%	474	\$69,570	\$751,909	N/A	N/A	0.2%
5-Year*	4.0%	0.9%	6.0%	1.6%	2011	1.3%	(1.7%)	4.1%	1.9%	(2.8%)	473	\$76,475	\$937,487	15.7%	13.1%	0.2%
3-Year*	2.8%	(0.2%)	5.3%	1.7%	2012	11.4%	8.1%	12.6%	2.0%	(1.1%)	483	\$88,475	\$1,272,265	11.8%	10.2%	0.2%
1-Year	(3.8%)	(6.7%)	(1.9%)	1.5%	2013	11.7%	8.4%	21.0%	2.0%	(9.3%)	483	\$99,018	\$1,955,915	9.7%	8.2%	0.1%
YTD	(12.6%)	(13.2%)	(13.1%)	0.3%	2014	13.6%	10.3%	11.5%	1.8%	2.1%	331	\$71,109	\$2,589,024	7.2%	6.3%	0.2%
QTD	(12.6%)	(13.2%)	(13.1%)	0.3%	2015	(0.9%)	(3.8%)	1.3%	1.4%	(2.2%)	442	\$85,189	\$3,175,419	7.8%	7.4%	0.1%
					2016	12.2%	8.9%	9.2%	1.5%	3.0%	187	\$34,169	\$4,413,659	8.5%	7.4%	0.2%
					2017	15.5%	12.1%	16.1%	1.8%	(0.6%)	259	\$63,074	\$5,944,479	7.7%	6.8%	0.1%
					2018	(8.1%)	(10.8%)	(2.8%)	2.0%	(5.2%)	289	\$60,638	\$5,486,737	8.9%	7.5%	0.1%
					2019	21.9%	18.3%	24.6%	1.6%	(2.7%)	292	\$74,376	\$7,044,708	9.8%	8.3%	0.2%

*Average annualized returns

**Inception is 9/1/2008

Portfolio Benchmark

The benchmark is calculated monthly and consists of a blend of 70% S&P 500 and 30% ML U.S. Corporate, Government, and Mortgage Bond Index (Source: Bloomberg)

The benchmark was changed retroactively on 7/1/13 to be more simplified. The custom benchmark prior to 7/1/13 was calculated monthly and consisted of: ML U.S. Corporate, Government, and Mortgage 38%, S&P 500 30%, S&P 400 15%, Russell 2000 10%, MSCI EAFE (gross) 5%, and ML T-Bill 2%. Inflation is provided as additional information and is represented by the U.S. 5-year TIP breakeven spread (Bloomberg: USGBE05 Index), which had 3-year standard deviation as follows: 0.1% 2011, 0.1% 2012, 0.1% 2013, 0.1% 2014, 0.1% 2015, 0.1% 2016, 0.1% 2017, 0.1% 2018, 0.1% 2019.

Confluence claims compliance with the Global Investment Performance Standards (GIPS®) and has prepared and presented this report in compliance with the GIPS standards. Confluence has been independently verified for the periods of 8/1/2008 through 12/31/2018. A copy of the verification report is available upon request. Verification assesses whether: 1. the firm has complied with all the composite construction requirements of the GIPS standards on a firm-wide basis, and 2. the firm's policies and procedures are designed to calculate and present performance in compliance with the GIPS standards. Verification does not ensure the accuracy of any specific composite presentation.

The Growth & Taxable Income-Plus Composite was created on September 1, 2008. Confluence Investment Management LLC is an independent registered investment adviser. Results are based on fully discretionary accounts under management, including those accounts no longer with the firm. Past performance is not indicative of future results. The U.S. Dollar is the currency used to express performance. Returns are presented gross and net of all fees and include the reinvestment of all income.

¹ Pure gross returns are shown as supplemental information to the disclosures required by the GIPS® standards.

² Net-of-fee performance was calculated using the highest applicable annual bundled fee of 3.00% applied quarterly. This fee includes brokerage commissions, portfolio management, consulting services and custodial services. The Confluence fee schedule for this composite is as follows: 0.40% on the first \$500,000; 0.35% on the next \$500,000; and 0.30% over \$1,000,000. There are no incentive fees. Clients pay an all-inclusive fee based on a percentage of assets under management. The collection of fees produces a compounding effect on the total rate of return net of fees. Bundled fee accounts make up 100% of the composite for all periods. Actual investment advisory fees incurred by clients may vary. Wrap fee schedules are provided by independent wrap sponsors and are available upon request from the respective wrap sponsor.

A complete list of composite descriptions is available upon request. Additional information regarding policies for valuing portfolios, calculating performance, and preparing compliant presentations are available upon request. The annual composite dispersion is an equal-weighted standard deviation calculated for accounts in the composite for the entire year. The Growth & Taxable Income-Plus Composite contains fully discretionary Growth & Taxable Income-Plus wrap accounts. The Growth & Income Taxable strategy is implemented using ETFs and the investment objective is the pursuit of nominal returns (yield and growth) in excess of inflation, subject to the limitations of the risk constraint for the Growth & Income Taxable strategy. The growth allocation may include equity asset classes ranging from small cap to large cap, with both domestic and international equities. Commodities may be utilized for total return as well as diversification benefits. Fixed income and real estate allocations will normally form the foundation to pursue taxable income objectives. This portfolio may be appropriate for investors with a moderate risk tolerance.

**Results shown for the year 2008 represent partial period performance from September 1, 2008, through December 31, 2008. N/A-Composite Dispersion: Information is not statistically meaningful due to an insufficient number of portfolios in the composite for the entire year. N/A-3yr Std Dev: Composite does not have 3 years of monthly performance history.

Confluence Asset Allocation Committee

Mark Keller, CFA

William O'Grady

Gregory Ellston

David Miyazaki, CFA

Patty Dahl

Kaisa Stucke, CFA

Patrick Fearon-Hernandez, CFA

The Confluence Mission

Our mission is to provide our clients with superior investment solutions and exceptional client service with the highest standards of ethics and integrity. Our team of investment professionals is committed to delivering innovative products and sound, practical advice to enable investors to achieve their investment objectives.

FOR MORE INFORMATION CONTACT ONE OF OUR SALES TEAM MEMBERS:

Wayne Knowles

National Sales Director

(919) 604-7604

wknowles@confluenceim.com

Ron Pond | West

Sr. Regional Sales Director

(858) 699-7945

rpond@confluenceim.com

Steve Mikez | North-Central

Sr. Regional Sales Director

(480) 529-8741

smikez@confluenceim.com

Jason Gantt | East

Regional Sales Director

(203) 733-9470

jpgantt@confluenceim.com

Jim Taylor | Mid-South

Regional Sales Director

(630) 605-7194

jtaylor@confluenceim.com