

OBJECTIVE

Combines objectives of growth and income, with more emphasis on growth, using tactical ETFs that are focused on generating alpha relative to an index rather than delivering the beta of the underlying index.

INVESTMENT PHILOSOPHY

Asset allocation is a portfolio management process where various asset classes are combined in one portfolio. Properly implemented, asset allocation is a time-tested approach that addresses risk through diversification. The Confluence approach to asset allocation is different than traditional asset allocation approaches which rely on long-term historical averages for strategic capital market assumptions. Confluence recognizes that risk levels and return potential rise and fall over market and economic cycles. Therefore, we apply an adaptive process in which the Confluence team estimates the performance of 12 different asset classes in terms of risk, return and yield looking forward 3 years. This cyclical approach is not market *timing*. Rather, the intention is to remain within an acceptable risk profile, while changing the asset class mix to optimize return potential. We may adjust allocations in much shorter time frames, depending upon changing views of the marketplace and economy. Alternately, we may abstain from making significant allocation adjustments if we believe the existing posture remains optimal. The process may involve somewhat higher turnover than a more static strategic program, but usually involves less trading relative to tactical approaches.

The asset allocation portfolios utilize exchange-traded funds (ETFs). We may use ETFs that allow us to focus on or avoid particular industry sectors, bond maturities, commodities or countries.

(Allocations as of 10/21/2021 rebalance)

OVERVIEW

- ◆ Combines objectives of growth and income, with more emphasis on growth
- ◆ Balances longer term perspective of a cyclical asset allocation model with tactical ETFs focused on generating alpha relative to an index, rather than delivering the beta
- ◆ Growth allocation may include equity asset classes ranging from small cap to large cap, with both domestic and international equities
- ◆ Commodities may be utilized for total return and diversification benefits
- ◆ Fixed income and real estate will normally form the foundation to pursue income objectives
- ◆ Profile is similar to that of a portfolio with a blend of stocks and bonds
- ◆ Appropriate for investors with a moderate risk tolerance

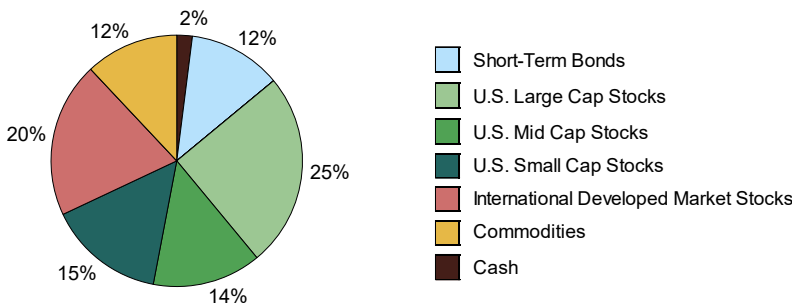
CHARACTERISTICS¹

Weighted SEC Yield	1.2%
Volatility Ceiling	14.0%
Number of Securities	17
Annual Turnover (3-Year Rolling)	75%

5 LARGEST HOLDINGS¹

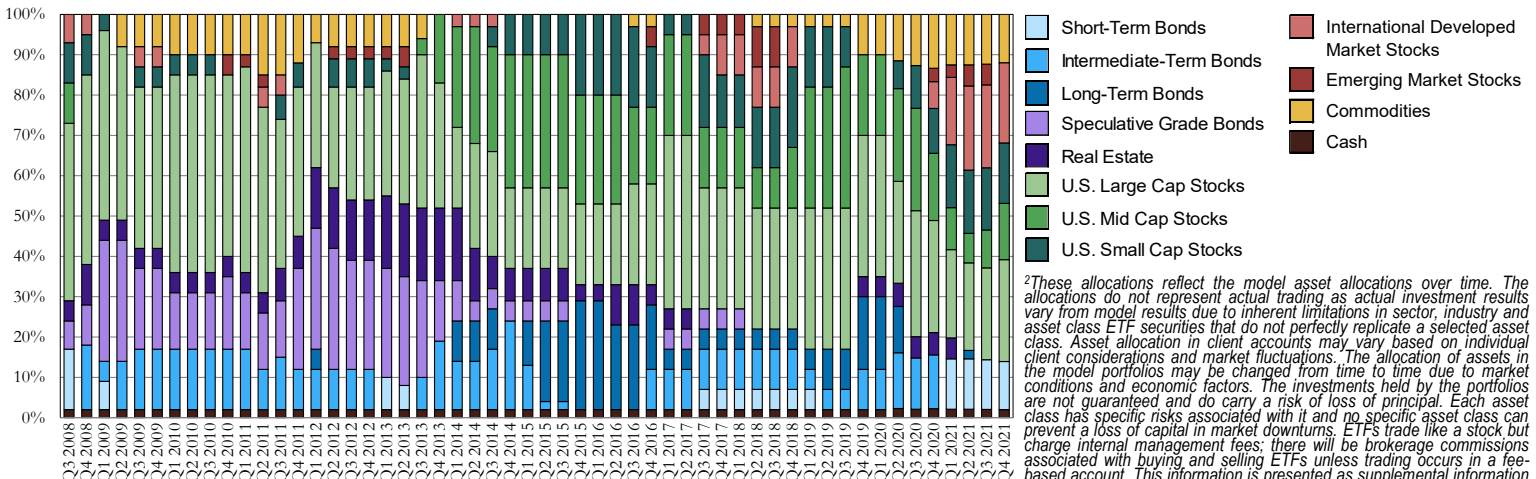
First Trust Dev Mkts Ex-US AlphaDEX® - FDT	16.0%
First Trust Large Cap Val AlphaDEX® - FTA	11.7%
First Trust Small Cap Val AlphaDEX® - FYT	9.8%
First Trust Mid Cap Value AlphaDEX® - FNK	9.1%
iShares Gold Trust - IAU	9.0%

ASSET ALLOCATION¹



¹This information is presented as supplemental information to the disclosures required by the GIPS® standards. Information presented reflects wrap account composites with "Plus" strategies & taxable income (if applicable). Asset allocations shown represent the individual ETFs used in the model portfolios as of 10/21/21 and do not represent the precise allocation of assets in an actual client account. Asset allocation in client accounts may vary based on individual client considerations and market fluctuations. The allocation of assets in the model portfolio may be changed from time to time due to market conditions and economic factors. The investments held by the portfolio are not guaranteed and do carry a risk of loss of principal. Each asset class has specific risks associated with it and no specific asset class can prevent a loss of capital in market downturns. The listing of "5 Largest Holdings" is not a complete list of all ETFs in the portfolio or which Confluence may be currently recommending. Application of the investment strategy as of a later date will likely result in changes to the listing. Individual client portfolios may differ, sometimes significantly, from these listings. Contact Confluence for a complete list of holdings. Yield data source: Morningstar. 30-day SEC yield of the model portfolio as of 10/21/21. Annual turnover 3-year rolling calculated from sample accounts for periods ending 12/31/2020.

HISTORICAL MODEL ALLOCATIONS²



²These allocations reflect the model asset allocations over time. The allocations do not represent actual trading, as actual investment results vary from model results due to inherent limitations in sector, industry and asset class ETF securities that do not perfectly replicate a selected asset class. Asset allocation in client accounts may vary based on individual client considerations and market fluctuations. The allocation of assets in the model portfolios may be changed from time to time due to market conditions and economic factors. The investments held by the portfolios are not guaranteed and do carry a risk of loss of principal. Each asset class has specific risks associated with it and no specific asset class can prevent a loss of capital in market downturns. ETFs trade like a stock but charge internal management fees; there will be brokerage commissions associated with buying and selling ETFs unless trading occurs in a fee-based account. This information is presented as supplemental information to the disclosures required by the GIPS® standards.

ABOUT CONFLUENCE INVESTMENT MANAGEMENT LLC

Confluence Investment Management is an independent Registered Investment Advisor located in St. Louis, Missouri, that provides professional portfolio management and advisory services to institutional and individual clients. Confluence's investment philosophy is based upon independent, fundamental research that integrates evaluation of market cycles, macroeconomics and geopolitical analysis with the firm's value-driven approach. The investment team's portfolio management philosophy begins by addressing risk and follows through by positioning clients to achieve income and growth objectives.

FOURTH QUARTER 2021 GROWTH & INCOME ALPHA MARKET OBSERVATIONS

- ◆ Although we expect the recovery's rapid pace of growth to slow markedly, we believe the probability of a recession within our three-year forecast period is low.
- ◆ Supply shortages, labor issues, and their attendant impact on inflation are expected to abate over the next 12-18 months, leading to our expectations for inflation to eventually settle within the Fed's threshold.
- ◆ The combination of aggressive monetary accommodation by the ECB, fiscal support across the continent, and solid GDP growth in the U.K. provides a favorable backdrop for European equities.
- ◆ Equity allocations among all strategies remain elevated with the retention of a heavy tilt toward value and, where risk appropriate, an overweight to lower capitalization stocks.
- ◆ The high allocation to international stocks remains intact given our expectations for overseas growth.
- ◆ Risks emanating from China lead to the elimination of emerging market positions in most strategies.
- ◆ Commodity exposure is retained with gold being employed across the array of strategies for the advantages it affords during heightened geopolitical risk.

The one change to the Growth & Income Alpha strategy was the elimination of the small allocation to emerging market stocks. The proceeds were moved to U.S. mid-cap stocks, which now carry an allocation nearly equivalent to U.S. small cap stocks. The allocations to short-term bonds, commodities, and U.S. large cap, U.S. small cap, and international developed market stocks remain intact. The strategy retains a skew to equities with risk mitigation from exposures to short-term bonds and commodities, the latter comprising gold and a basket of commodities with a concentration in energy.

Information provided in this report is for educational and illustrative purposes only and should not be construed as individualized investment advice or a recommendation. The investment or strategy discussed may not be suitable for all investors. Investors must make their own decisions based on their specific investment objectives and financial circumstances. Opinions expressed are current as of the date shown and are subject to change.

PERFORMANCE COMPOSITE RETURNS (FOR PERIODS ENDING SEPTEMBER 30, 2021)

	Pure Gross-of-Fees ¹	Net-of-Fees ²	Benchmark (70stock/30bond)	Inflation	Calendar Year	Pure Gross-of-Fees ¹	Net-of-Fees ²	Benchmark (70stock/30bond)	Inflation	Difference (Gross-Bchmrk)	# of Portfolios	Composite Assets (000s)	Total Firm Assets (000s)	Composite 3yr Std Dev	Bchmrk 3yr Std Dev	Composite Dispersion
Since Inception**	9.6%	6.3%	10.9%	1.7%	2014**	6.8%	4.7%	8.6%	1.1%	(1.8%)	1	\$134	\$1,955,915	N/A	N/A	N/A
5-Year*	11.5%	8.2%	12.8%	1.8%	2015	(4.2%)	(7.0%)	1.3%	1.4%	(5.5%)	3	\$1,866	\$3,175,419	N/A	N/A	N/A
3-Year*	13.0%	9.6%	13.1%	1.8%	2016	11.8%	8.5%	9.2%	1.5%	2.6%	1	\$143	\$4,413,659	N/A	N/A	N/A
1-Year	29.0%	25.2%	20.0%	2.3%	2017	14.7%	11.3%	16.1%	1.8%	(1.4%)	1	\$164	\$5,944,479	8.1%	6.8%	N/A
YTD	11.1%	8.6%	10.4%	1.9%	2018	(10.4%)	(13.0%)	(2.8%)	2.0%	(7.5%)	1	\$147	\$5,486,737	9.6%	7.5%	N/A
QTD	(1.3%)	(2.0%)	0.4%	0.6%	2019	19.7%	16.2%	24.6%	1.6%	(4.8%)	1	\$176	\$7,044,708	10.7%	8.3%	N/A
					2020	25.9%	22.2%	15.8%	1.3%	10.1%	1	\$1,028	\$6,889,798	16.3%	13.0%	N/A

*Average annualized returns

**Inception is 5/1/2014

Portfolio Benchmark

The benchmark is calculated monthly and consists of a blend of 70% S&P 500 and 30% ICE BofA U.S. Corporate, Government, and Mortgage Bond Index (Source: Bloomberg)

Inflation is provided as additional information and is represented by the U.S. 5-year TIP breakeven spread (Bloomberg: USGGBE05 Index), which had 3-year standard deviation as follows: 0.1% 2014, 0.1% 2015, 0.1% 2016, 0.1% 2017, 0.1% 2018, 0.1% 2019, 0.1% 2020.

Confluence Investment Management LLC claims compliance with the Global Investment Performance Standards (GIPS®) and has prepared and presented this report in compliance with the GIPS standards. Confluence Investment Management LLC has been independently verified for the periods August 1, 2008, through December 31, 2020. The verification report is available upon request. A firm that claims compliance with the GIPS standards must establish policies and procedures for complying with all the applicable requirements of the GIPS standards.

Verification provides assurance on whether the firm's policies and procedures related to composite maintenance, as well as the calculation, presentation, and distribution of performance, have been designed in compliance with the GIPS standards and have been implemented on a firm-wide basis. Verification does not provide assurance on the accuracy of any specific performance report.

GIPS® is a registered trademark of CFA Institute. CFA Institute does not endorse or promote this organization, nor does it warrant the accuracy or quality of the content contained herein.

The Growth & Income Taxable Alpha-Plus Strategy was inception on May 1, 2014, and the current Growth & Income Taxable Alpha-Plus Composite was created on April 1, 2015. Confluence Investment Management LLC is an independent registered investment adviser. Results are based on fully discretionary accounts under management, including those accounts no longer with the firm. Past performance is not indicative of future results. The U.S. Dollar is the currency used to express performance. Returns are presented gross and net of all fees and include the reinvestment of all income.

¹Pure gross returns are shown as supplemental information to the disclosures required by the GIPS® standards.

²Net-of-fee performance was calculated using the highest applicable annual bundled fee of 3.00% applied quarterly. This fee includes brokerage commissions, portfolio management, consulting services and custodial services. The Confluence fee schedule for this composite is as follows: 0.40% on the first \$500,000; 0.35% on the next \$500,000; and 0.30% over \$1,000,000. There are no incentive fees. Clients pay an all-inclusive fee based on a percentage of assets under management. The collection of fees produces a compounding effect on the total rate of return net of fees. From April 1, 2015, to September 30, 2016, bundled fee accounts made up 100% of the composite. Actual investment advisory fees incurred by clients may vary. Wrap fee schedules are provided by independent wrap sponsors and are available upon request from the respective wrap sponsor.

Performance prior to April 1, 2015, and after September 30, 2016, is based on the Growth & Income Taxable Alpha-Plus-Direct Composite which was created on May 1, 2014. This composite includes accounts that pursue the Growth & Income Taxable Alpha-Plus strategy, but do not have bundled fees. Gross returns from the Growth & Income Taxable Alpha-Plus-Direct Composite include transaction costs and net-of-fee performance was calculated using the highest applicable annual bundled fee of 3.00% applied quarterly.

A complete list of composite descriptions is available upon request. Policies for valuing investments, calculating performance, and preparing GIPS Reports are available upon request. The annual composite dispersion is an equal-weighted standard deviation, using gross-of-fee returns, calculated for the accounts in the composite for the entire year. The three-year annualized standard deviation measures the variability of the composite gross returns over the preceding 36-month period. The Growth & Income Taxable Alpha-Plus Composite contains fully discretionary Growth & Income Taxable Alpha-Plus wrap accounts. The Growth & Income Taxable Alpha-Plus strategy is implemented using "Alpha" ETFs that seek to outperform an underlying index. The investment objective is the pursuit of nominal returns (yield and growth) in excess of inflation, subject to the limitations of the risk constraint for the Growth & Income Taxable Alpha-Plus strategy. The growth allocation may include equity asset classes ranging from small cap to large cap, with both domestic and international equities. Commodities may be utilized for total return as well as diversification benefits. Fixed income and real estate allocations will normally form the foundation to pursue taxable income objectives. This portfolio may be appropriate for investors with a moderate risk tolerance.

**Results shown for the year 2014 represent partial period performance from May 1, 2014, through December 31, 2014. N/A-Composite Dispersion: Information is not statistically meaningful due to an insufficient number of portfolios in the composite for the entire year. N/A-3yr Std Dev: Composite does not have 3 years of monthly performance history.

Confluence Asset Allocation Committee

Mark Keller, CFA
 Gregory Ellston
 William O'Grady
 David Miyazaki, CFA

Patty Dahl
 Kaisa Stucke, CFA
 Patrick Fearon-Hernandez, CFA

The Confluence Mission

Our mission is to provide our clients with superior investment solutions and exceptional client service with the highest standards of ethics and integrity. Our team of investment professionals is committed to delivering innovative products and sound, practical advice to enable investors to achieve their investment objectives.

FOR MORE INFORMATION CONTACT A MEMBER OF OUR SALES TEAM:

Wayne Knowles
 National Sales Director
 (314) 526-0914
 wknowles@confluenceim.com

Ron Pond, CFA | West
 Sr. Regional Sales Director
 (314) 526-0759
 rpond@confluenceim.com

Michael Kelnosky | North-Central
 Regional Sales Director
 (314) 526-0622
 mkelnosky@confluenceim.com

Jason Gantt | East
 Regional Sales Director
 (314) 526-0364
 jgantt@confluenceim.com

Jim Taylor | Mid-South
 Regional Sales Director
 (314) 526-0469
 jtaylor@confluenceim.com