

Asset Allocation

Growth & Income Alpha



Second Quarter 2026

Objective

Combines objectives of growth and income, with more emphasis on growth, using tactical ETFs that are focused on generating alpha relative to an index rather than delivering the beta of the underlying index.

Investment Philosophy

Asset allocation is a time-tested approach that addresses risk through diversification, while positioning portfolios to achieve growth, income, and other client-specific objectives. Confluence employs an *adaptive* approach to asset allocation that evaluates the investing landscape against the backdrop of the pending business cycle, as we recognize that risk levels and return potential rise and fall over market and economic cycles.

Through a disciplined, consensus-driven process, the Confluence team estimates the performance of 12 different asset classes in terms of risk, return, and yield looking forward three years. The intention is to remain within an acceptable risk profile, while changing the asset class mix to optimize return potential. Allocations are adjusted depending upon the investment committee's changing views of the marketplace and economy, utilizing over/underweights to focus on particular industry sectors, maturities, commodities, or countries. Confluence's Asset Allocation portfolios offer a broad spectrum of risk profiles and are implemented using exchange-traded funds (ETFs).

Overview

- Combines objectives of growth and income, with more emphasis on growth
- Balances longer term perspective of a cyclical asset allocation model with tactical ETFs focused on generating alpha relative to an index, rather than delivering the beta
- Growth allocation may include equity asset classes ranging from small cap to large cap, with both domestic and international equities
- Commodities may be utilized for total return and diversification benefits
- Fixed income and real estate will normally form the foundation to pursue income objectives
- Profile is similar to that of a portfolio with a blend of stocks and bonds
- Appropriate for investors with a moderate risk tolerance
- Strategy assets: \$62.4 million¹

¹ Strategy assets = \$0.2 million assets under management (AUM) + \$62.2 million assets under advisement (AUA); as of 12/31/25.

Current Holdings²

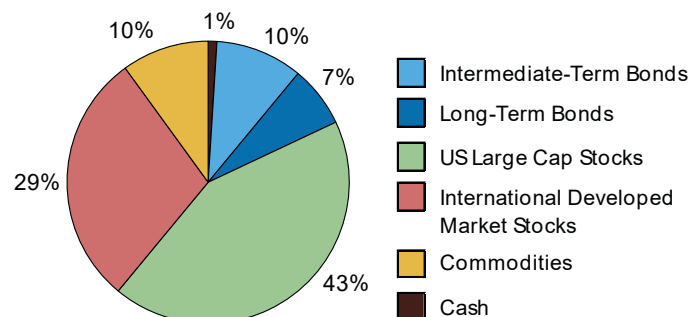
(As of 4/28/2026 rebalance)

See GIPS Report on pages 2-3

Characteristics	
Weighted SEC Yield	2.1%
Volatility Ceiling	14.0%
Number of Securities	15
Annual Turnover (3-Yr Rolling as of 12/31/25)	89%

5 Largest Holdings	
First Trust Developed Mkts ex-US AlphaDEX® ETF - FDT	16.5%
First Trust Large Cap Growth AlphaDEX® ETF - FTC	15.4%
First Trust Large Cap Value AlphaDEX® ETF - FTA	14.2%
SPDR® Gold MiniShares ETF - GLDM	10.0%
SPDR® Portfolio Mortgage Backed Bond ETF - SPMB	9.0%

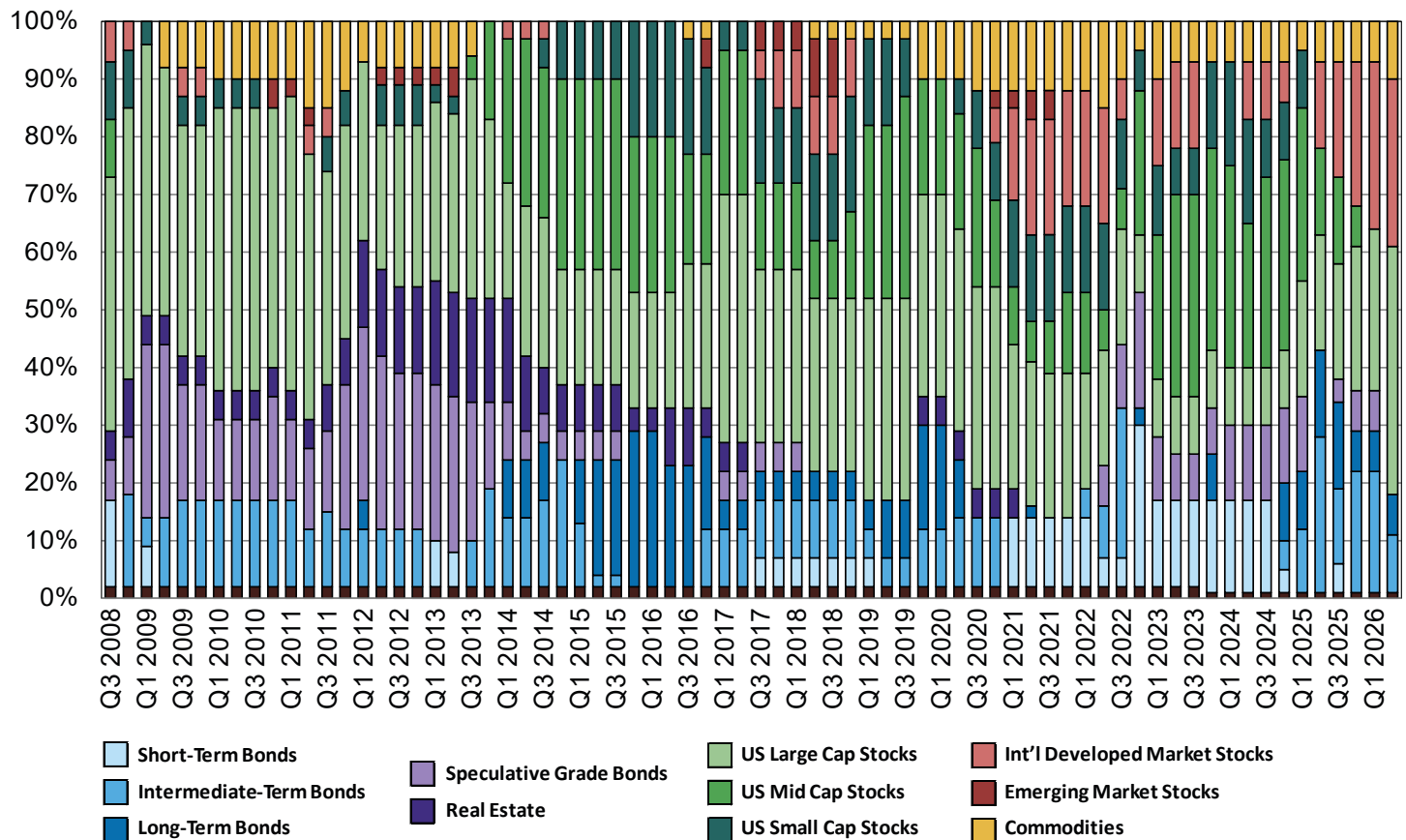
Asset Allocation



Recent Portfolio Changes³

In the Growth & Income Alpha strategy, we reduced the allocation to intermediate-term bonds and eliminated speculative bonds in favor of increasing large cap equities and commodities. The US equity allocation is tilted toward value, with continued emphasis on dividend-paying and defense-oriented sectors. We also added an energy sector overweight to take advantage of changing supply dynamics. Within international developed equities, we added an Asia Pacific holding to supplement the broad-based, Europe-specific, small cap, and global metals and mining positions. Gold remains a strategic position in the portfolio as it benefits from global central bank purchases and offers stability.

Historical Model Allocation²



Performance Composite Returns⁴ (For periods ending March 31, 2026)

	Since Inception**	10-Year*	5-Year*	3-Year*	1-Year	YTD	QTD
Growth & Income Alpha							
<i>Pure Gross-Of-Fees⁵</i>	8.7%	9.8%	7.2%	13.0%	18.3%	3.0%	3.0%
<i>Max Net-Of-Fees⁶</i>	5.5%	6.5%	4.1%	9.7%	14.8%	2.3%	2.3%
Benchmark (70stock/30bond)	9.8%	10.5%	8.6%	13.8%	13.7%	(3.1%)	(3.1%)

Calendar Year	Pure Gross-Of-Fees ⁵	Max Net-Of-Fees ⁶	Benchmark (70stock/30bond)	Difference (Gross-Benchmark)	# of Portfolios	Composite Assets (000s)	Total Firm Assets (000s)	Composite 3yr Std Dev	Benchmark 3yr Std Dev	Composite Dispersion
2014**	6.8%	4.7%	8.5%	(1.7%)	1	\$134	\$1,955,915	N/A	N/A	N/A
2015	(4.2%)	(7.0%)	1.3%	(5.5%)	3	\$1,866	\$3,175,419	N/A	N/A	N/A
2016	11.8%	8.5%	9.2%	2.6%	1	\$143	\$4,413,659	N/A	N/A	N/A
2017	14.7%	11.3%	16.1%	(1.4%)	1	\$164	\$5,944,479	8.1%	6.8%	N/A
2018	(10.4%)	(13.0%)	(2.8%)	(7.5%)	1	\$147	\$5,486,737	9.6%	7.5%	N/A
2019	19.7%	16.2%	24.5%	(4.8%)	1	\$176	\$7,044,708	10.7%	8.3%	N/A
2020	25.9%	22.2%	15.7%	10.2%	1	\$1,028	\$6,889,798	16.3%	13.1%	N/A
2021	16.1%	12.7%	19.0%	(2.8%)	1	\$167	\$7,761,687	15.0%	12.1%	N/A
2022	(11.8%)	(14.4%)	(16.4%)	4.6%	1	\$147	\$6,931,635	16.1%	15.5%	N/A
2023	15.2%	11.8%	19.8%	(4.5%)	1	\$170	\$7,200,019	13.0%	13.7%	N/A
2024	10.7%	7.5%	17.5%	(6.7%)	1	\$188	\$7,280,773	13.7%	13.8%	N/A
2025	13.2%	9.8%	14.7%	(1.5%)	1	\$212	\$6,769,052	11.1%	9.5%	N/A

*Average annualized returns

**Inception is 5/1/2014

See performance disclosures on last page.

Confluence Asset Allocation Committee

Mark Keller, CFA

Bill O'Grady

Patty Dahl

Sean Long

Patrick Fearon-
Hernandez, CFA

Greg Ellston

David Miyazaki, CFA

Kaisa Stucke, CFA

Thomas Wash

For more information, contact a member of our Sales Team:

(314) 530-6729 or sales@confluenceim.com

See [Territory Map](#) on the Confluence website for sales coverage

Disclosures

² **Current Portfolio**—Information presented reflects wrap account composites with taxable income (if applicable). Asset allocations shown represent the individual ETFs used in the model portfolios as of 4/28/26 and do not represent the precise allocation of assets in an actual client account. Asset allocation in client accounts may vary based on individual client considerations and market fluctuations. The investments held by the portfolio are not guaranteed and do carry a risk of loss of principal. Each asset class has specific risks associated with it and no specific asset class can prevent a loss of capital in market downturns. Individual client portfolios may differ, sometimes significantly, from these listings. Yield data source: Morningstar. 30-day SEC yield of the model portfolio as of 4/28/26. Annual turnover 3-year rolling calculated from sample accounts for periods ending 12/31/2025.

³ **Recent Portfolio Changes**—The investment or strategy discussed may not be suitable for all investors. Investors must make their own decisions based on their specific investment objectives and financial circumstances.

Benchmark: 70% stock / 30% bond –Custom benchmark is calculated monthly and consists of a blend of 70% S&P 500 and 30% Bloomberg US Aggregate Bond Index. (Source: Bloomberg)

⁴ **Performance Composite Returns**—Confluence Investment Management LLC claims compliance with the Global Investment Performance Standards (GIPS®) and has prepared and presented this report in compliance with the GIPS standards. Confluence Investment Management LLC has been independently verified for the periods August 1, 2008, through December 31, 2024. The verification report is available upon request. A firm that claims compliance with the GIPS standards must establish policies and procedures for complying with all the applicable requirements of the GIPS standards.

Verification provides assurance on whether the firm's policies and procedures related to composite maintenance, as well as the calculation, presentation, and distribution of performance, have been designed in compliance with the GIPS standards and have been implemented on a firm-wide basis. Verification does not provide assurance on the accuracy of any specific performance report. GIPS® is a registered trademark of CFA Institute. CFA Institute does not endorse or promote this organization, nor does it warrant the accuracy or quality of the content contained herein.

The Growth & Income Taxable Alpha-Plus Strategy was inceptioned on May 1, 2014, and the current Growth & Income Taxable Alpha-Plus Composite was created on April 1, 2015. Confluence Investment Management LLC is an independent registered investment adviser. Results are based on fully discretionary accounts under management, including those accounts no longer with the firm. Past performance is not indicative of future results. The US Dollar is the currency used to express performance. Returns are presented gross and net of all fees and include the reinvestment of all income.

⁵ Pure gross returns are shown as supplemental information to the disclosures required by the GIPS® standards.

⁶ Net-of-fee performance was calculated using the highest applicable annual bundled fee of 3.00% applied quarterly. This fee includes brokerage commissions, portfolio management, consulting services and custodial services. The Confluence fee schedule for this composite is as follows: 0.40% on the first \$500,000; 0.35% on the next \$500,000; and 0.30% over \$1,000,000. There are no incentive fees. Clients pay an all-inclusive fee based on a percentage of assets under management. The collection of fees produces a compounding effect on the total rate of return net of fees. Subsequent to July 1, 2019, bundled fee accounts make up 100% of the composite. Actual investment advisory fees incurred by clients may vary. Wrap fee schedules are provided by independent wrap sponsors and are available upon request from the respective wrap sponsor.

Performance prior to April 1, 2015, and after September 30, 2016, is based on the Growth & Income Taxable Alpha-Plus-Direct Composite which was created on May 1, 2014. This composite includes accounts that pursue the Growth & Income Taxable Alpha-Plus strategy, but do not have bundled fees. Gross returns from the Growth & Income Taxable Alpha-Plus-Direct Composite include transaction costs and net-of-fee performance was calculated using the highest applicable annual bundled fee of 3.00% applied quarterly. A complete list of composite descriptions is available upon request. Policies for valuing investments, calculating performance, and preparing GIPS Reports are available upon request. The annual composite dispersion is an equal-weighted standard deviation, using gross-of-fee returns, calculated for the accounts in the composite for the entire year. The three-year annualized standard deviation measures the variability of the composite gross returns over the preceding 36-month period. The Growth & Income Taxable Alpha-Plus Composite contains fully discretionary Growth & Income Taxable Alpha-Plus wrap accounts. The Growth & Income Taxable Alpha-Plus strategy is implemented using "Alpha" ETFs that seek to outperform an underlying index. The investment objective is the pursuit of nominal returns (yield and growth) in excess of inflation, subject to the limitations of the risk constraint for the Growth & Income Taxable Alpha-Plus strategy. The growth allocation may include equity asset classes ranging from small cap to large cap, with both domestic and international equities. Commodities may be utilized for total return as well as diversification benefits. Fixed income and real estate allocations will normally form the foundation to pursue taxable income objectives. This portfolio may be appropriate for investors with a moderate risk tolerance.

**Results shown for the year 2014 represent partial period performance from May 1, 2014, through December 31, 2014. N/A-Composite Dispersion: Information is not statistically meaningful due to an insufficient number of portfolios in the composite for the entire year. N/A-3yr Std Dev: Composite does not have 3 years of monthly performance history.