

OBJECTIVE

Combines objectives of growth and income, with more emphasis on growth, using tactical ETFs that are focused on generating alpha relative to an index rather than delivering the beta of the underlying index.

INVESTMENT PHILOSOPHY

Asset allocation is a portfolio management process where various asset classes are combined in one portfolio. Properly implemented, asset allocation is a time-tested approach that addresses risk through diversification. The Confluence approach to asset allocation is different than traditional asset allocation approaches which rely on long-term historical averages for strategic capital market assumptions. Confluence recognizes that risk levels and return potential rise and fall over market and economic cycles. Therefore, we apply an adaptive process in which the Confluence team estimates the performance of 12 different asset classes in terms of risk, return and yield looking forward 3 years. This cyclical approach is not market *timing*. Rather, the intention is to remain within an acceptable risk profile, while changing the asset class mix to optimize return potential. We may adjust allocations in much shorter time frames, depending upon changing views of the marketplace and economy. Alternately, we may abstain from making significant allocation adjustments if we believe the existing posture remains optimal. The process may involve somewhat higher turnover than a more static strategic program, but usually involves less trading relative to tactical approaches.

The asset allocation portfolios utilize exchange-traded funds (ETFs). We may use ETFs that allow us to focus on or avoid particular industry sectors, bond maturities, commodities or countries.

OVERVIEW

- ◆ Combines objectives of growth and income, with more emphasis on growth
- ◆ Balances longer term perspective of a cyclical asset allocation model with tactical ETFs focused on generating alpha relative to an index, rather than delivering the beta
- ◆ Growth allocation may include equity asset classes ranging from small cap to large cap, with both domestic and international equities
- ◆ Commodities may be utilized for total return and diversification benefits
- ◆ Fixed income and real estate will normally form the foundation to pursue income objectives
- ◆ Profile is similar to that of a portfolio with a blend of stocks and bonds
- ◆ Appropriate for investors with a moderate risk tolerance

CHARACTERISTICS¹

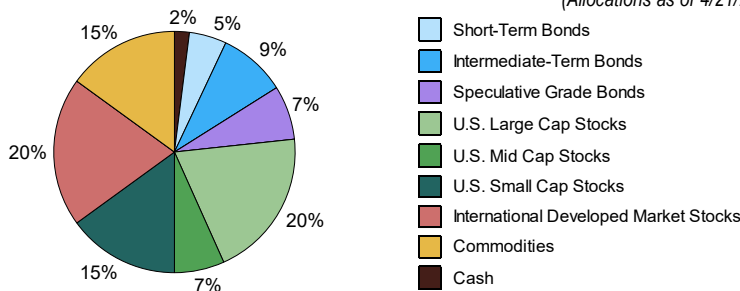
Weighted SEC Yield	1.6%
Volatility Ceiling	14.0%
Number of Securities	20
Annual Turnover (3-Year Rolling as of 12/31/21)	69%

5 LARGEST HOLDINGS¹

First Trust Dev Mkts Ex-US AlphaDEX® - FDT	13.0%
First Trust Large Cap Val AlphaDEX® - FTA	9.8%
First Trust Small Cap Val AlphaDEX® - FYT	9.8%
First Trust Global Tactical Commodity - FTGC	9.0%
First Trust United Kingdom AlphaDEX® - FJP	7.0%

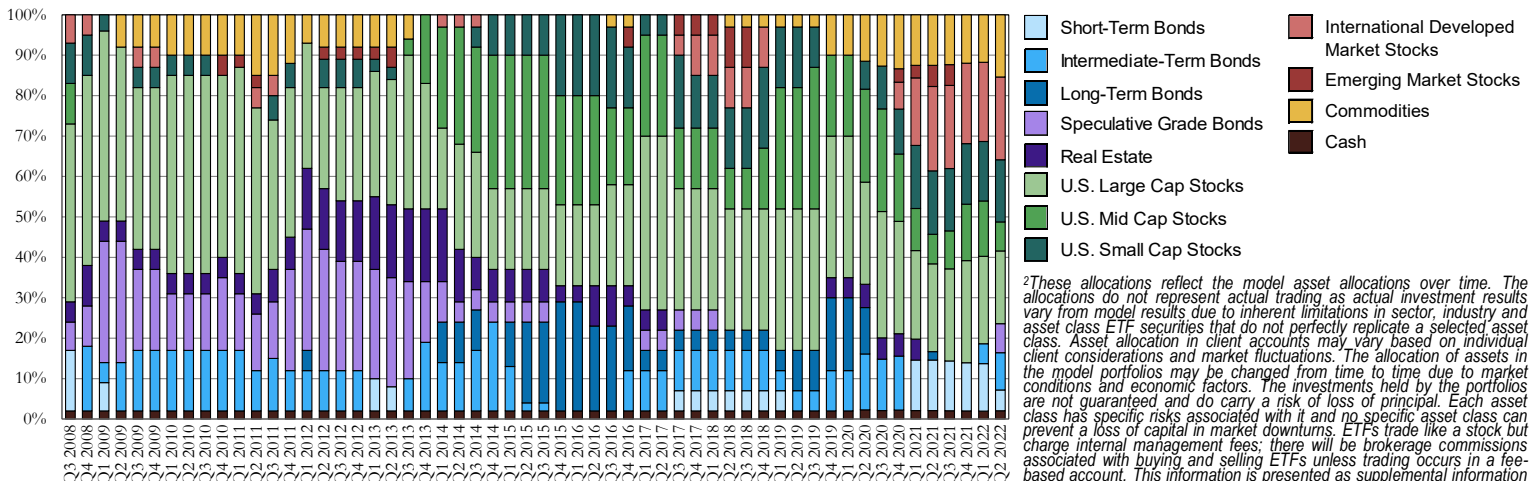
ASSET ALLOCATION¹

(Allocations as of 4/21/2022 rebalance)



¹This information is presented as supplemental information to the disclosures required by the GIPS® standards. Information presented reflects wrap account composites with "Plus" strategies & taxable income (if applicable). Asset allocations shown represent the individual ETFs used in the model portfolios as of 4/21/22 and do not represent the precise allocation of assets in an actual client account. Asset allocation in client accounts may vary based on individual client considerations and market fluctuations. The allocation of assets in the model portfolio may be changed from time to time due to market conditions and economic factors. The investments held by the portfolio are not guaranteed and do carry a risk of loss of principal. Each asset class has specific risks associated with it and no specific asset class can prevent a loss of capital in market downturns. The listing of "5 Largest Holdings" is not a complete list of all ETFs in the portfolio or which Confluence may be currently recommending. Application of the investment strategy as of a later date will likely result in changes to the listing. Individual client portfolios may differ, sometimes significantly, from these listings. Contact Confluence for a complete list of holdings. Yield data source: Morningstar. 30-day SEC yield of the model portfolio as of 4/21/22. Annual turnover 3-year rolling calculated from sample accounts for periods ending 12/31/2021.

HISTORICAL MODEL ALLOCATIONS²



²These allocations reflect the model asset allocations over time. The allocations do not represent actual trading as actual investment results vary from model results due to inherent limitations in sector, industry and asset class ETF securities that do not perfectly replicate a selected asset class. Asset allocation in client accounts may vary based on individual client considerations and market fluctuations. The allocation of assets in the model portfolios may be changed from time to time due to market conditions and economic factors. The investments held by the portfolios are not guaranteed and do carry a risk of loss of principal. Each asset class has specific risks associated with it and no specific asset class can prevent a loss of capital in market downturns. ETFs trade like a stock but charge internal management fees; there will be brokerage commissions associated with buying and selling ETFs unless trading occurs in a fee-based account. This information is presented as supplemental information to the disclosures required by the GIPS® standards.

ABOUT CONFLUENCE INVESTMENT MANAGEMENT LLC

Confluence Investment Management is an independent Registered Investment Advisor located in St. Louis, Missouri, that provides professional portfolio management and advisory services to institutional and individual clients. Confluence's investment philosophy is based upon independent, fundamental research that integrates evaluation of market cycles, macroeconomics and geopolitical analysis with the firm's value-driven approach. The investment team's portfolio management philosophy begins by addressing risk and follows through by positioning clients to achieve income and growth objectives.

SECOND QUARTER 2022 GROWTH & INCOME ALPHA MARKET OBSERVATIONS

- ◆ In its efforts to combat inflation, the U.S. Federal Reserve has adopted a much more hawkish monetary policy stance through a combination of raising the fed funds rate and reducing its balance sheet.
- ◆ Global central banks, in contrast, have varying policy responses ranging from extensively accommodative to increasingly hawkish.
- ◆ Given the shifting landscape, the potential for a policy mistake leading to an economic slowdown or even a recession has increased.
- ◆ Equity allocations were trimmed across all strategies and are now underweight. Bond allocations were increased in strategies with income as an objective, while exposure to commodities was enhanced in growth-oriented strategies.
- ◆ U.S. stock exposure remains heavily tilted to value, with overweights to defensive sectors instead of the prior elevated exposure to cyclical sectors.
- ◆ A position in broad-based commodities with an emphasis on oil is employed across the array of strategies as is a position in gold given the advantages it affords during periods of heightened geopolitical risk.

We made several changes this quarter designed to mitigate risk in the Growth & Income Alpha strategy. Half of the U.S. mid-cap equity allocation was repurposed through an introduction to speculative grade bonds as we find the risk/reward ratio more attractive in the expectation of a slowing economy. We added a portion of the short-term bond exposure to the intermediate segment of the curve as well as to broad-based commodities. The investment-grade bond exposure is a laddered maturity mix of Treasuries and investment-grade corporates and there remains a void to long-term bonds. Stocks now represent an underweight in the strategy, while commodities are significantly overweight.

Information provided in this report is for educational and illustrative purposes only and should not be construed as individualized investment advice or a recommendation. The investment or strategy discussed may not be suitable for all investors. Investors must make their own decisions based on their specific investment objectives and financial circumstances. Opinions expressed are current as of the date shown and are subject to change.

PERFORMANCE COMPOSITE RETURNS (FOR PERIODS ENDING MARCH 31, 2022)

	Pure Gross-of-Fees ¹	Net-of-Fees ²	Benchmark (70stock/30bond)	Inflation	Calendar Year	Pure Gross-of-Fees ¹	Net-of-Fees ²	Benchmark (70stock/30bond)	Inflation	Difference (Gross-Bchmrk)	# of Portfolios	Composite Assets (000s)	Total Firm Assets (000s)	Composite 3yr Std Dev	Bchmrk 3yr Std Dev	Composite Dispersion
Since Inception**	9.2%	6.0%	10.5%	1.8%	2014**	6.8%	4.7%	8.6%	1.1%	(1.8%)	1	\$134	\$1,955,915	N/A	N/A	N/A
5-Year*	11.3%	8.0%	12.0%	1.9%	2015	(4.2%)	(7.0%)	1.3%	1.4%	(5.5%)	3	\$1,866	\$3,175,419	N/A	N/A	N/A
3-Year*	15.3%	11.8%	13.9%	2.0%	2016	11.8%	8.5%	9.2%	1.5%	2.6%	1	\$143	\$4,413,659	N/A	N/A	N/A
1-Year	5.6%	2.5%	9.5%	2.8%	2017	14.7%	11.3%	16.1%	1.8%	(1.4%)	1	\$164	\$5,944,479	8.1%	6.8%	N/A
YTD	(2.2%)	(3.0%)	(5.0%)	0.8%	2018	(10.4%)	(13.0%)	(2.8%)	2.0%	(7.5%)	1	\$147	\$5,486,737	9.6%	7.5%	N/A
QTD	(2.2%)	(3.0%)	(5.0%)	0.8%	2019	19.7%	16.2%	24.6%	1.6%	(4.8%)	1	\$176	\$7,044,708	10.7%	8.3%	N/A
					2020	25.9%	22.2%	15.8%	1.3%	10.1%	1	\$1,028	\$6,889,798	16.3%	13.0%	N/A
					2021	16.1%	12.7%	18.9%	2.6%	(2.8%)	1	\$167	\$7,761,687	15.0%	12.1%	N/A

*Average annualized returns

**Inception is 5/1/2014

Portfolio Benchmark

The benchmark is calculated monthly and consists of a blend of 70% S&P 500 and 30% ICE BofA U.S. Corporate, Government, and Mortgage Bond Index (Source: Bloomberg)

Inflation is provided as additional information and is represented by the U.S. 5-year TIP breakeven spread (Bloomberg: USGGBE05 Index), which had 3-year standard deviation as follows: 0.1% 2014, 0.1% 2015, 0.1% 2016, 0.1% 2017, 0.1% 2018, 0.1% 2019, 0.1% 2020, 0.2% 2021.

Confluence Investment Management LLC claims compliance with the Global Investment Performance Standards (GIPS®) and has prepared and presented this report in compliance with the GIPS standards. Confluence Investment Management LLC has been independently verified for the periods August 1, 2008, through December 31, 2020. The verification report is available upon request. A firm that claims compliance with the GIPS standards must establish policies and procedures for complying with all the applicable requirements of the GIPS standards.

Verification provides assurance on whether the firm's policies and procedures related to composite maintenance, as well as the calculation, presentation, and distribution of performance, have been designed in compliance with the GIPS standards and have been implemented on a firm-wide basis. Verification does not provide assurance on the accuracy of any specific performance report.

GIPS® is a registered trademark of CFA Institute. CFA Institute does not endorse or promote this organization, nor does it warrant the accuracy or quality of the content contained herein.

The Growth & Income Taxable Alpha-Plus Strategy was inception on May 1, 2014, and the current Growth & Income Taxable Alpha-Plus Composite was created on April 1, 2015. Confluence Investment Management LLC is an independent registered investment adviser. Results are based on fully discretionary accounts under management, including those accounts no longer with the firm. Past performance is not indicative of future results. The U.S. Dollar is the currency used to express performance. Returns are presented gross and net of all fees and include the reinvestment of all income.

¹ Pure gross returns are shown as supplemental information to the disclosures required by the GIPS® standards.

² Net-of-fee performance was calculated using the highest applicable annual bundled fee of 3.00% applied quarterly. This fee includes brokerage commissions, portfolio management, consulting services and custodial services. The Confluence fee schedule for this composite is as follows: 0.40% on the first \$500,000; 0.35% on the next \$500,000; and 0.30% over \$1,000,000. There are no incentive fees. Clients pay an all-inclusive fee based on a percentage of assets under management. The collection of fees produces a compounding effect on the total rate of return net of fees. From April 1, 2015, to September 30, 2016, bundled fee accounts made up 100% of the composite. Actual investment advisory fees incurred by clients may vary. Wrap fee schedules are provided by independent wrap sponsors and are available upon request from the respective wrap sponsor.

Performance prior to April 1, 2015, and after September 30, 2016, is based on the Growth & Income Taxable Alpha-Plus-Direct Composite which was created on May 1, 2014. This composite includes accounts that pursue the Growth & Income Taxable Alpha-Plus strategy, but do not have bundled fees. Gross returns from the Growth & Income Taxable Alpha-Plus-Direct Composite include transaction costs and net-of-fee performance was calculated using the highest applicable annual bundled fee of 3.00% applied quarterly. A complete list of composite descriptions is available upon request. Policies for valuing investments, calculating performance, and preparing GIPS Reports are available upon request. The annual composite dispersion is an equal-weighted standard deviation, using gross-of-fee returns, calculated for the accounts in the composite for the entire year. The three-year annualized standard deviation measures the variability of the composite gross returns over the preceding 36-month period. The Growth & Income Taxable Alpha-Plus Composite contains fully discretionary Growth & Income Taxable Alpha-Plus wrap accounts. The Growth & Income Taxable Alpha-Plus strategy is implemented using "Alpha" ETFs that seek to outperform an underlying index. The investment objective is the pursuit of nominal returns (yield and growth) in excess of inflation, subject to the limitations of the risk constraint for the Growth & Income Taxable Alpha-Plus strategy. The growth allocation may include equity asset classes ranging from small cap to large cap, with both domestic and international equities. Commodities may be utilized for total return as well as diversification benefits. Fixed income and real estate allocations will normally form the foundation to pursue taxable income objectives. This portfolio may be appropriate for investors with a moderate risk tolerance. **Results shown for the year 2014 represent partial period performance from May 1-December 31, 2014. N/A-Composite Dispersion: Information is not statistically meaningful due to an insufficient number of portfolios in the composite for the entire year. N/A-3yr Std Dev: Composite does not have 3 years of monthly performance history.

Confluence Asset Allocation Committee

Mark Keller, CFA	Patty Dahl
Gregory Ellston	Kaisa Stucke, CFA
William O'Grady	Patrick Fearon-Hernandez, CFA
David Miyazaki, CFA	

The Confluence Mission

Our mission is to provide our clients with superior investment solutions and exceptional client service with the highest standards of ethics and integrity. Our team of investment professionals is committed to delivering innovative products and sound, practical advice to enable investors to achieve their investment objectives.

FOR MORE INFORMATION CONTACT A MEMBER OF OUR SALES TEAM:

Wayne Knowles National Sales Director (314) 526-0914 wknowles@confluenceim.com	Ron Pond, CFA West Sr. Regional Sales Director (314) 526-0759 rpond@confluenceim.com	Jason Gantt East Sr. Regional Sales Director (314) 526-0364 jgantt@confluenceim.com	Michael Kelnosky North-Central Regional Sales Director (314) 526-0622 mkelnosky@confluenceim.com	Jim Taylor Mid-South Regional Sales Director (314) 526-0469 jtaylor@confluenceim.com
---	---	--	---	---