

OBJECTIVE

Primary objective is capital appreciation with higher risk tolerance. Profile is similar to that of an aggressively positioned, all-equity portfolio.

INVESTMENT PHILOSOPHY

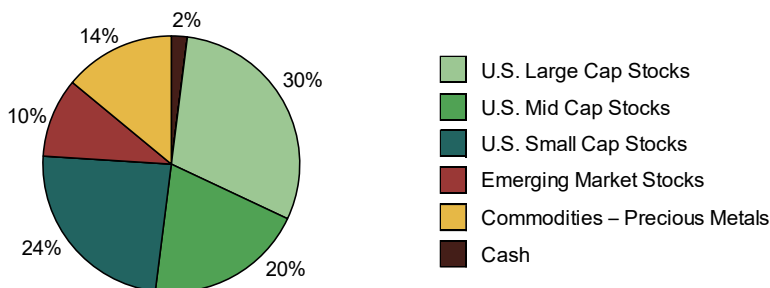
Asset allocation is a portfolio management process where various asset classes are combined in one portfolio. Properly implemented, asset allocation is a time-tested approach that addresses risk through diversification. The Confluence approach to asset allocation is different than traditional asset allocation approaches which rely on long-term historical averages for strategic capital market assumptions. Confluence recognizes that risk levels and return potential rise and fall over market and economic cycles. Therefore, we apply an adaptive process in which the Confluence team estimates the performance of 12 different asset classes in terms of risk, return and yield looking forward 3 years. This cyclical approach is not market *timing*. Rather, the intention is to remain within an acceptable risk profile, while changing the asset class mix to optimize return potential. We may adjust allocations in much shorter time frames, depending upon changing views of the marketplace and economy. Alternately, we may abstain from making significant allocation adjustments if we believe the existing posture remains optimal. The process may involve somewhat higher turnover than a more static strategic program, but usually involves less trading relative to tactical approaches.

The asset allocation portfolios utilize exchange-traded funds (ETFs). We may use ETFs that allow us to focus on or avoid particular industry sectors, bond maturities, commodities or countries.

OVERVIEW

- ◆ Focused on capital appreciation and can tolerate high levels of risk
- ◆ Allocation may include domestic and foreign equity asset classes, as well as commodities, real estate and occasionally fixed income investments
- ◆ At times, may be more concentrated in asset classes with higher return potential, including those with higher levels of volatility
- ◆ Profile is similar to that of an aggressively positioned, all-equity portfolio
- ◆ Appropriate for equity-oriented investors with a higher risk tolerance

ASSET ALLOCATION¹



CHARACTERISTICS¹

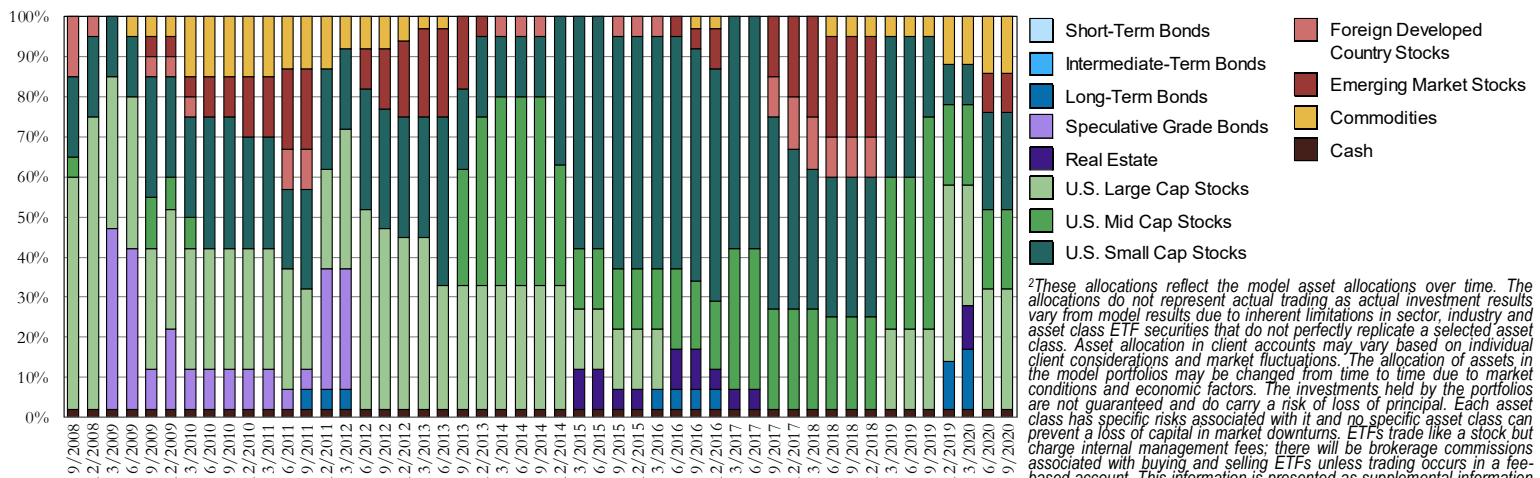
Weighted SEC Yield	1.6%
Number of Securities	10-21
Annual Turnover (3-Year Rolling)	65%

5 LARGEST HOLDINGS¹

SPDR® S&P 600 Small Cap Growth ETF - SLYG	12.0%
SPDR® S&P 600 Small Cap Value ETF - SLYV	12.0%
SPDR® Portfolio S&P 500 Growth ETF - SPYG	11.7%
SPDR® Portfolio S&P 500 Value ETF - SPYV	11.7%
iShares Gold Trust - IAU	11.0%

¹This information is presented as supplemental information to the disclosures required by the GIPS® standards. Information presented reflects wrap account composites with "Plus" strategies & taxable income (if applicable). Asset allocations shown represent the individual ETFs used in the model portfolios as of 7/21/20 and do not represent the precise allocation of assets in an actual client account. Asset allocation in client accounts may vary based on individual client considerations and market fluctuations. The allocation of assets in the model portfolio may be changed from time to time due to market conditions and economic factors. The investments held by the portfolio are not guaranteed and do carry a risk of loss of principal. Each asset class has specific risks associated with it and no specific asset class can prevent a loss of capital in market downturns. The listing of "5 Largest Holdings" is not a complete list of all ETFs in the portfolio or which Confluence may be currently recommending. Application of the investment strategy as of a later date will likely result in changes to the listing. Individual client portfolios may differ, sometimes significantly, from these listings. Contact Confluence for a complete list of holdings. Yield data source: Morningstar. 30-day SEC yield for the model portfolio as of 7/21/20. Annual turnover 3-year rolling calculated from sample accounts for periods ending 12/31/2019.

HISTORICAL MODEL ALLOCATIONS²



²These allocations reflect the model asset allocations over time. The allocations do not represent actual trading, as actual investment results vary from model results due to inherent limitations in sector, industry and asset class ETF securities that do not perfectly replicate a selected asset class. Asset allocation in client accounts may vary based on individual client considerations and market fluctuations. The allocation of assets in the model portfolios may be changed from time to time due to market conditions and economic factors. The investments held by the portfolios are not guaranteed and do carry a risk of loss of principal. Each asset class has specific risks associated with it and no specific asset class can prevent a loss of capital in market downturns. ETFs trade like a stock but charge internal management fees; there will be brokerage commissions associated with buying and selling ETFs unless trading occurs in a fee-based account. This information is presented as supplemental information to the disclosures required by the GIPS® standards.

ABOUT CONFLUENCE INVESTMENT MANAGEMENT LLC

Confluence Investment Management is an independent Registered Investment Advisor located in St. Louis, Missouri, that provides professional portfolio management and advisory services to institutional and individual clients. Confluence's investment philosophy is based upon independent, fundamental research that integrates evaluation of market cycles, macroeconomics and geopolitical analysis with the firm's value-driven approach. The investment team's portfolio management philosophy begins by addressing risk and follows through by positioning clients to achieve income and growth objectives.

THIRD QUARTER 2020 AGGRESSIVE GROWTH MARKET OBSERVATIONS

- ◆ We expect the current U.S. recession to be deep, yet brief, with a long period of recovery and the potential for expansion toward the latter portion of our forecast period.
- ◆ The Federal Reserve has stabilized the financial markets and ensured the continued functioning of the corporate debt market.
- ◆ Long-term Treasuries served the strategies well, especially through the first half of this year, but appear to have run their course and are now absent from all strategies.
- ◆ We retain a favorable outlook for equities. Therefore, elevated exposures are maintained and the former overweight to growth has been brought to an even weight with value.
- ◆ Valuations are favorable for lower capitalization stocks, which are represented in each of the strategies.
- ◆ Precious metals occupy an increased weight in each strategy with gold supplemented by a modest exposure to silver.

There were no changes to the asset class exposures in the Aggressive Growth strategy from last quarter. Minor adjustments were made within U.S. equities, however, including the removal of the former tilt to growth, with growth and value now equally weighted. There remains an inherent tilt to growth in large caps due to continued sector overweights to Technology, Communications Services, and Consumer Discretionary. The only other change was the elimination of the quality factor. Although the quality factor proved beneficial during its use beginning in the fourth quarter of last year, especially as equity markets were under duress, we do not expect it to perform as admirably in the early stages of a recovery. Gold and a modest exposure to silver remain in the strategy as we believe both stand to benefit from ample global liquidity and silver has proven beneficial in the early stages of past recoveries.

Information provided in this report is for educational and illustrative purposes only and should not be construed as individualized investment advice or a recommendation. The investment or strategy discussed may not be suitable for all investors. Investors must make their own decisions based on their specific investment objectives and financial circumstances. Opinions expressed are current as of the date shown and are subject to change.

PERFORMANCE COMPOSITE RETURNS (FOR PERIODS ENDING JUNE 30, 2020)

	Pure Gross-of-Fees ¹	Net-of-Fees ²	Benchmark (S&P 500)	Inflation	Calendar Year	Pure Gross-of-Fees ¹	Net-of-Fees ²	Benchmark (S&P 500)	Inflation	Difference (Gross-Bchmrk)	# of Portfolios	Composite Assets (000s)	Total Firm Assets (000s)	Composite 3yr Std Dev	S&P 500 3yr Std Dev	Composite Dispersion
Since Inception**	7.1%	3.9%	10.1%	1.6%	2008**	(29.1%)	(30.0%)	(27.9%)	0.1%	(1.3%)	1	\$18	\$291,644	N/A	N/A	N/A
					2009	30.9%	27.0%	26.5%	1.1%	4.4%	12	\$1,040	\$533,832	N/A	N/A	N/A
10-Year*	10.0%	6.7%	14.0%	1.7%	2010	17.1%	13.6%	15.1%	1.6%	2.0%	23	\$2,744	\$751,909	N/A	N/A	0.3%
5-Year*	7.3%	4.1%	10.7%	1.6%	2011	(4.3%)	(7.2%)	2.1%	1.9%	(6.4%)	19	\$2,613	\$937,487	19.0%	18.7%	0.1%
3-Year*	7.4%	4.2%	10.7%	1.7%	2012	10.4%	7.2%	16.0%	2.0%	(5.6%)	23	\$3,654	\$1,272,265	15.8%	15.1%	0.1%
1-Year	10.1%	6.8%	7.5%	1.3%	2013	23.7%	20.0%	32.4%	2.0%	(8.7%)	21	\$4,949	\$1,955,915	12.7%	11.9%	0.1%
YTD	3.5%	2.0%	(3.1%)	0.5%	2014	9.6%	6.4%	13.7%	1.8%	(4.1%)	22	\$5,808	\$2,589,024	10.0%	9.0%	0.1%
QTD	20.9%	20.0%	20.5%	0.2%	2015	(2.2%)	(5.1%)	1.4%	1.4%	(3.6%)	24	\$5,925	\$3,175,419	10.8%	10.5%	0.2%
					2016	16.1%	12.6%	12.0%	1.5%	4.1%	21	\$5,737	\$4,413,659	11.9%	10.6%	0.2%
					2017	13.9%	10.5%	21.8%	1.8%	(7.9%)	22	\$6,967	\$5,944,479	10.9%	9.9%	0.0%
					2018	(11.1%)	(13.7%)	(4.4%)	2.0%	(6.7%)	22	\$6,083	\$5,486,737	11.9%	10.8%	0.3%
					2019	22.5%	18.8%	31.5%	1.6%	(9.0%)	20	\$6,594	\$7,044,708	12.6%	11.9%	0.2%

*Average annualized returns

**Inception is 8/1/2008

Portfolio Benchmark

The benchmark is the S&P 500 Index (Source: Bloomberg)

The benchmark was changed retroactively on 7/1/13 to be more simplified. The custom benchmark prior to 7/1/13 was calculated monthly and consisted of: S&P 500 38%, S&P 400 20%, Russell 2000 20%, MSCI EAFE (gross) 15%, MSCI Emerging Markets (gross) 5%, and ML T-Bill 2%. Inflation is provided as additional information and is represented by the U.S. 5-year TIP breakeven spread (Bloomberg: USGGBE05 Index), which had 3-year standard deviation as follows: 0.1% 2011, 0.1% 2012, 0.1% 2013, 0.1% 2014, 0.1% 2015, 0.1% 2016, 0.1% 2017, 0.1% 2018, 0.1% 2019.

Confluence claims compliance with the Global Investment Performance Standards (GIPS®) and has prepared and presented this report in compliance with the GIPS standards. Confluence has been independently verified for the periods of 8/1/2008 through 12/31/2018. A copy of the verification report is available upon request. Verification assesses whether: 1. the firm has complied with all the composite construction requirements of the GIPS standards on a firm-wide basis, and 2. the firm's policies and procedures are designed to calculate and present performance in compliance with the GIPS standards. Verification does not ensure the accuracy of any specific composite presentation.

The Aggressive Growth Strategy was inception on August 1, 2008, and the current Aggressive Growth-Plus Composite was created on April 1, 2009. Confluence Investment Management LLC is an independent registered investment adviser. Results are based on fully discretionary accounts under management, including those accounts no longer with the firm. Past performance is not indicative of future results. The U.S. Dollar is the currency used to express performance. Returns are presented gross and net of all fees and include the reinvestment of all income.

¹ Pure gross returns are shown as supplemental information to the disclosures required by the GIPS® standards.

² Net-of-fee performance was calculated using the highest applicable annual bundled fee of 3.00% applied quarterly. This fee includes brokerage commissions, portfolio management, consulting services and custodial services. The Confluence fee schedule for this composite is as follows: 0.40% on the first \$500,000; 0.35% on the next \$500,000; and 0.30% over \$1,000,000. There are no incentive fees. Clients pay an all-inclusive fee based on a percentage of assets under management. The collection of fees produces a compounding effect on the total rate of return net of fees. Bundled fee accounts make up 100% of the composite for all periods. Actual investment advisory fees incurred by clients may vary. Wrap fee schedules are provided by independent wrap sponsors and are available upon request from the respective wrap sponsor.

Performance prior to April 1, 2009, is based on the Aggressive Growth-Foundation-Direct Composite which was created on August 1, 2008. This composite includes accounts that pursue the Aggressive Growth strategy, but have a different fee structure and have a smaller balance so they forgo the sector-specific breakout of equity market allocations. Gross returns from the Aggressive Growth-Foundation-Direct Composite include transaction costs and net-of-fee performance was calculated using the highest applicable annual bundled fee of 3.00% applied quarterly.

A complete list of composite descriptions is available upon request. Additional information regarding policies for valuing portfolios, calculating performance, and preparing compliant presentations are available upon request. The annual composite dispersion is an equal-weighted standard deviation calculated for accounts in the composite for the entire year. The Aggressive Growth-Plus Composite contains fully discretionary Aggressive Growth-Plus wrap accounts. The Aggressive Growth strategy is implemented using ETFs and the investment objective is the pursuit of nominal returns (yield and growth) in excess of inflation, subject to the limitations of the risk constraint for the Aggressive Growth strategy. The allocation is implemented using ETFs and may include domestic and international equity asset classes, as well as commodities, real estate and occasionally, fixed income investments. This portfolio may be appropriate for equity-oriented investors with a higher risk tolerance.

**Results shown for the year 2008 represent partial period performance from August 1, 2008, through December 31, 2008. N/A-Composite Dispersion: Information is not statistically meaningful due to an insufficient number of portfolios in the composite for the entire year. N/A-3yr Std Dev: Composite does not have 3 years of monthly performance history.

Confluence Asset Allocation Committee

Mark Keller, CFA	Patty Dahl
Gregory Ellston	Kaisa Stucke, CFA
William O'Grady	Patrick Fearon-Hernandez, CFA
David Miyazaki, CFA	

The Confluence Mission

Our mission is to provide our clients with superior investment solutions and exceptional client service with the highest standards of ethics and integrity. Our team of investment professionals is committed to delivering innovative products and sound, practical advice to enable investors to achieve their investment objectives.

FOR MORE INFORMATION CONTACT A MEMBER OF OUR SALES TEAM:

Wayne Knowles National Sales Director (314) 526-0914 wknowles@confluenceim.com	Ron Pond West Sr. Regional Sales Director (314) 526-0759 rpond@confluenceim.com	Steve Mikez North-Central Sr. Regional Sales Director (314) 526-0776 smikez@confluenceim.com	Jason Gantt East Regional Sales Director (314) 526-0364 jgantt@confluenceim.com	Jim Taylor Mid-South Regional Sales Director (314) 526-0469 jtaylor@confluenceim.com
---	--	---	--	---